

VXI

Getting Started with Your VXIpc™ Embedded Controller for VxWorks

Internet Support

E-mail: support@natinst.com

FTP Site: [ftp.natinst.com](ftp://ftp.natinst.com)

Web Address: <http://www.natinst.com>

Bulletin Board Support

BBS United States: 512 794 5422

BBS United Kingdom: 01635 551422

BBS France: 01 48 65 15 59

Fax-on-Demand Support

512 418 1111

Telephone Support (USA)

Tel: 512 795 8248

Fax: 512 794 5678

International Offices

Australia 03 9879 5166, Austria 0662 45 79 90 0, Belgium 02 757 00 20, Brazil 011 288 3336,
Canada (Ontario) 905 785 0085, Canada (Québec) 514 694 8521, Denmark 45 76 26 00, Finland 09 725 725 11,
France 01 48 14 24 24, Germany 089 741 31 30, Hong Kong 2645 3186, Israel 03 6120092, Italy 02 413091,
Japan 03 5472 2970, Korea 02 596 7456, Mexico 5 520 2635, Netherlands 0348 433466, Norway 32 84 84 00,
Singapore 2265886, Spain 91 640 0085, Sweden 08 730 49 70, Switzerland 056 200 51 51, Taiwan 02 377 1200,
United Kingdom 01635 523545

National Instruments Corporate Headquarters

6504 Bridge Point Parkway Austin, Texas 78730-5039 USA Tel: 512 794 0100

Important Information

Warranty

The National Instruments VXIpc embedded computers and accessories are warranted against defects in materials and workmanship for a period of one year from the date of shipment, as evidenced by receipts or other documentation. National Instruments will, at its option, repair or replace equipment that proves to be defective during the warranty period. This warranty includes parts and labor.

The media on which you receive National Instruments software are warranted not to fail to execute programming instructions, due to defects in materials and workmanship, for a period of 90 days from date of shipment, as evidenced by receipts or other documentation. National Instruments will, at its option, repair or replace software media that do not execute programming instructions if National Instruments receives notice of such defects during the warranty period. National Instruments does not warrant that the operation of the software shall be uninterrupted or error free.

A Return Material Authorization (RMA) number must be obtained from the factory and clearly marked on the outside of the package before any equipment will be accepted for warranty work. National Instruments will pay the shipping costs of returning to the owner parts which are covered by warranty.

National Instruments believes that the information in this manual is accurate. The document has been carefully reviewed for technical accuracy. In the event that technical or typographical errors exist, National Instruments reserves the right to make changes to subsequent editions of this document without prior notice to holders of this edition. The reader should consult National Instruments if errors are suspected. In no event shall National Instruments be liable for any damages arising out of or related to this document or the information contained in it.

EXCEPT AS SPECIFIED HEREIN, NATIONAL INSTRUMENTS MAKES NO WARRANTIES, EXPRESS OR IMPLIED, AND SPECIFICALLY DISCLAIMS ANY WARRANTY OF MERCHANTABILITY OR FITNESS FOR A PARTICULAR PURPOSE. CUSTOMER'S RIGHT TO RECOVER DAMAGES CAUSED BY FAULT OR NEGLIGENCE ON THE PART OF NATIONAL INSTRUMENTS SHALL BE LIMITED TO THE AMOUNT THERETOFORE PAID BY THE CUSTOMER. NATIONAL INSTRUMENTS WILL NOT BE LIABLE FOR DAMAGES RESULTING FROM LOSS OF DATA, PROFITS, USE OF PRODUCTS, OR INCIDENTAL OR CONSEQUENTIAL DAMAGES, EVEN IF ADVISED OF THE POSSIBILITY THEREOF. This limitation of the liability of National Instruments will apply regardless of the form of action, whether in contract or tort, including negligence. Any action against National Instruments must be brought within one year after the cause of action accrues. National Instruments shall not be liable for any delay in performance due to causes beyond its reasonable control. The warranty provided herein does not cover damages, defects, malfunctions, or service failures caused by owner's failure to follow the National Instruments installation, operation, or maintenance instructions; owner's modification of the product; owner's abuse, misuse, or negligent acts; and power failure or surges, fire, flood, accident, actions of third parties, or other events outside reasonable control.

Copyright

Under the copyright laws, this publication may not be reproduced or transmitted in any form, electronic or mechanical, including photocopying, recording, storing in an information retrieval system, or translating, in whole or in part, without the prior written consent of National Instruments Corporation.

Trademarks

NI-488™, NI-VXI™, and VXIpc™ are trademarks of National Instruments Corporation.

Product and company names listed are trademarks or trade names of their respective companies.

WARNING REGARDING MEDICAL AND CLINICAL USE OF NATIONAL INSTRUMENTS PRODUCTS

National Instruments products are not designed with components and testing intended to ensure a level of reliability suitable for use in treatment and diagnosis of humans. Applications of National Instruments products involving medical or clinical treatment can create a potential for accidental injury caused by product failure, or by errors on the part of the user or application designer. Any use or application of National Instruments products for or involving medical or clinical treatment must be performed by properly trained and qualified medical personnel, and all traditional medical safeguards, equipment, and procedures that are appropriate in the particular situation to prevent serious injury or death should always continue to be used when National Instruments products are being used. National Instruments products are NOT intended to be a substitute for any form of established process, procedure, or equipment used to monitor or safeguard human health and safety in medical or clinical treatment.

Compliance

FCC/DOC Radio Frequency Interference Class A Compliance

This equipment generates and uses radio frequency energy and, if not installed and used in strict accordance with the instructions in this manual, may cause interference to radio and television reception. Classification requirements are the same for the Federal Communications Commission (FCC) and the Canadian Department of Communications (DOC). This equipment has been tested and found to comply with the following two regulatory agencies:

Federal Communications Commission

This equipment has been tested and found to comply with the limits for a Class A digital device, pursuant to part 15 of the FCC Rules. These limits are designed to provide reasonable protection against harmful interference when the equipment is operated in a commercial environment. This equipment generates, uses, and can radiate radio frequency energy and, if not installed and used in accordance with the instruction manual, may cause harmful interference to radio communications. Operation of this equipment in a residential area is likely to cause harmful interference in which case the user will be required to correct the interference at his own expense.

Notices to User: *Changes or modifications not expressly approved by National Instruments could void the user's authority to operate the equipment under the FCC Rules.*

This device complies with the FCC rules only if used with shielded interface cables of suitable quality and construction. National Instruments used such cables to test this device and provides them for sale to the user. The use of inferior or nonshielded interface cables could void the user's authority to operate the equipment under the FCC rules.

If necessary, consult National Instruments or an experienced radio/television technician for additional suggestions. The following booklet prepared by the FCC may also be helpful: *Interference to Home Electronic Entertainment Equipment Handbook*. This booklet is available from the U.S. Government Printing Office, Washington, DC 20402.

Canadian Department of Communications

This Class A digital apparatus meets all requirements of the Canadian Interference-Causing Equipment Regulations.

Cet appareil numérique de la classe A respecte toutes les exigences du Règlement sur le matériel brouilleur du Canada.

Contents

About This Manual

Organization of This Manual	ix
Conventions Used in This Manual.....	x
How to Use This Documentation Set	xi
Related Documentation.....	xii
Customer Communication	xii

Chapter 1

Introduction

How to Use This Manual	1-1
What You Need to Get Started	1-1
Hardware Description	1-2
Software Description	1-2
Software Notes for VxWorks	1-3
Files and Directories Installed on Your Hard Drive	1-3
Getting Started with VxWorks	1-4
Developing for VxWorks	1-4
Software Included with Your VXIpc Controller	1-4
Using the VXIpc Board Support Package to Create the VxWorks Operating System	1-5
Mapping the MITE Windows	1-6
Reinstalling the NI-VXI Software	1-7

Chapter 2

Setup

Step 1. Configure the Hardware	2-1
Step 2. Install the Hardware.....	2-1
Step 3. Set up the VXIpc Controller with VxWorks	2-2

Chapter 3

NI-VXI Configuration Utility

Running the vxitedit Configuration Utility.....	3-1
VXIpc Configuration Editor	3-1
Update Current Configuration.....	3-2
Record Configuration to File.....	3-2
Load Configuration from File	3-2
Revert to Current Configuration.....	3-2

Logical Address Configuration Editor	3-3
Logical Address	3-3
Device Type	3-3
Address Space	3-3
VXI Shared RAM Size	3-4
Shared RAM Pool	3-4
Advanced Shared RAM Settings	3-4
Resource Manager Delay	3-5
Device Configuration Editor	3-5
System IRQ Level	3-5
Servant Area Size	3-6
Number of Handlers	3-6
Number of Interrupters	3-6
Protocol Register	3-6
Read Protocol Response	3-7
Bus Configuration Editor	3-7
VXI Bus Timeout	3-7
Automatic VXIbus Retry Protocol	3-7
Automatic VXI Slave Cycle Retry	3-7
A24/A32 Write Posting	3-8
VXI Transfer Limit	3-8
Arbiter Type	3-9
Request Level	3-9
VXI Fair Requester	3-9
Arbiter Timeout	3-9
User Window and Driver Window	3-10
VXI/VME-MXI-2 Configuration Editor	3-11
Logical Address	3-11
Address Space and Requested Memory	3-12
A16 Write Post and A24/A32 Write Posting	3-12
Interlocked Mode	3-13
VMEbus System Controller	3-14
VXI/VME Auto Retry	3-15
VXI/VME Bus Timeout Value	3-15
VXI/VME Transfer Limit	3-15
Arbiter Type	3-16
Arbiter Timeout	3-16
Request Level	3-16
VXI/VME Fair Requester	3-17
MXI Bus System Controller	3-17
MXI Auto Retry	3-17
MXI Bus Timeout Value	3-17
Transfer Limit	3-18

MXI CLK10 Signal	3-18
Parity Checking	3-18
MXI Fair Requester	3-19

Chapter 4

Developing Your Application

Configuration	4-1
Device Interaction	4-2
VME Support	4-2
Programming with VXI	4-3
Compiling Your C Program	4-4
Symbols	4-4

Appendix A

Default Settings

Appendix B

Common Questions

Appendix C

Customer Communication

Glossary

Index

Tables

Table 1-1.	Ethernet Driver Default Settings	1-6
Table 4-1.	NI-VXI Examples	4-4
Table A-1.	VXIpc 800 Series Hardware Default Settings	A-1
Table A-2.	VXIpc 700 Series Hardware Default Settings	A-2
Table A-3.	Logical Address Configuration Editor Default Settings	A-2
Table A-4.	Device Configuration Editor Default Settings	A-3
Table A-5.	Bus Configuration Editor Default Settings	A-3
Table A-6.	VXI/VME-MXI-2 Configuration Editor Default Settings	A-4

About This Manual

Use this manual to get started with the VXIpc embedded computers and the NI-VXI software for VxWorks. This manual summarizes the setup instructions and default settings for the hardware and software. You may find that these sections contain as much information as you need to get started with your VXIpc kit.




Organization of This Manual

This manual is organized as follows:

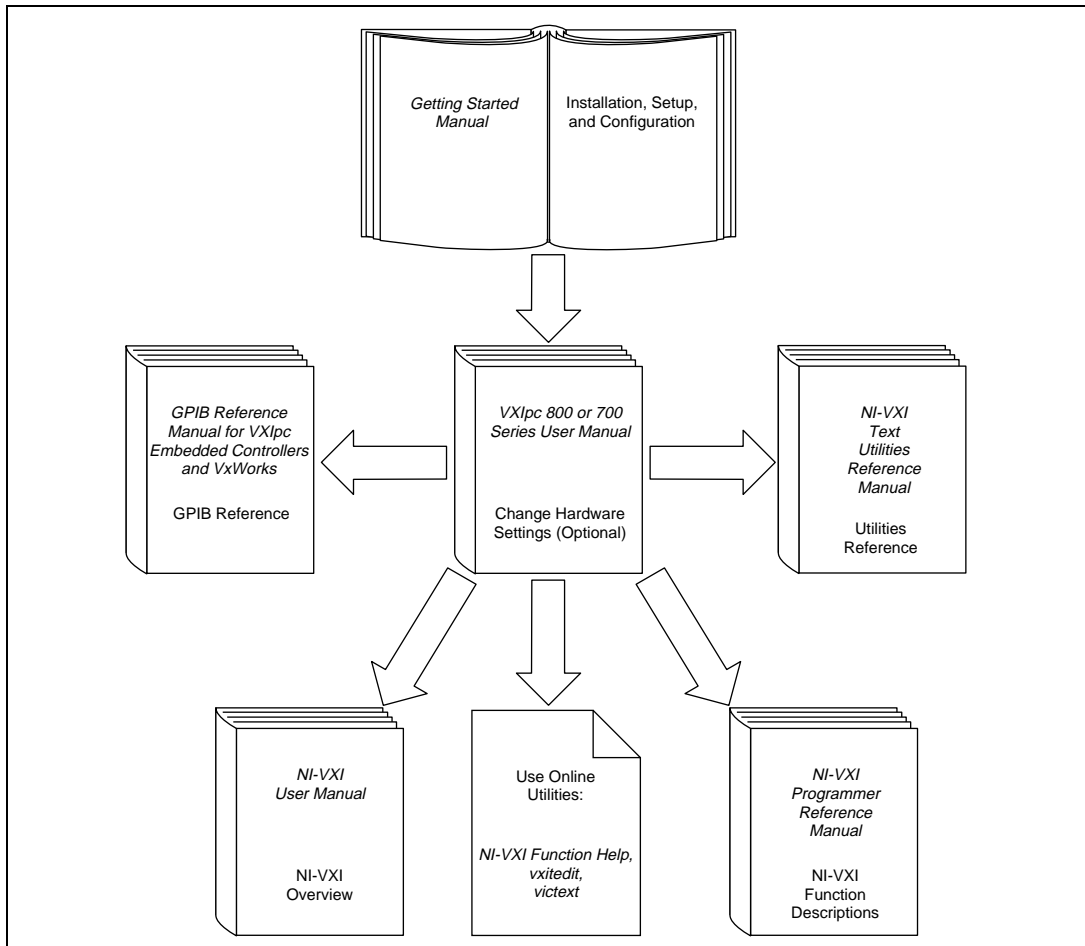
- Chapter 1, *Introduction*, describes the VXIpc embedded VXI computers and the NI-VXI software, lists what you need to get started, and gives an overview of the directory structure on your hard drive.
- Chapter 2, *Setup*, contains basic instructions for setting up the VXIpc embedded controller and the NI-VXI software.
- Chapter 3, *NI-VXI Configuration Utility*, contains instructions for using the VXI Resource Editor to configure the VXIpc embedded computer and the VXI-MXI-2 or VME-MXI-2 chassis extender.
- Chapter 4, *Developing Your Application*, discusses the software utilities you can use to start developing applications that use the NI-VXI driver.
- Appendix A, *Default Settings*, summarizes the default settings for the hardware and software in your kit.
- Appendix B, *Common Questions*, addresses common questions you may have about using the NI-VXI software on the VXIpc platform for VxWorks.
- Appendix C, *Customer Communication*, contains forms you can use to request help from National Instruments or to comment on our products and manuals.
- The *Glossary* contains an alphabetical list and description of terms used in this manual, including abbreviations, acronyms, metric prefixes, mnemonics, and symbols.
- The *Index* contains an alphabetical list of key terms and topics in this manual, including the page where you can find each one.

Conventions Used in This Manual

The following conventions are used in this manual:

- ◆ The ◆ symbol indicates that the text following it applies only to a specific product, a specific operating system, or a specific software version.
-  This icon to the left of bold italicized text denotes a note, which alerts you to important information.
-  This icon to the left of bold italicized text denotes a caution, which advises you of precautions to take to avoid injury, data loss, or a system crash.
-  This icon to the left of bold italicized text denotes a warning, which advises you of precautions to take to avoid being electrically shocked.
- bold** Bold text denotes the names of menus, menu items, or dialog box buttons or options.
- bold italic*** Bold italic text denotes a note, caution, or warning.
- italic* Italic text denotes emphasis, a cross reference, or an introduction to a key concept. This font also denotes text for which you supply the appropriate word or value.
- monospace Text in this font denotes text or characters that are to be literally enter from the keyboard, sections of code, programming examples, and syntax examples. This font is also used for the proper names of disk drives, paths, directories, programs, subprograms, subroutines, device names, functions, variables, filenames, and extensions.
- monospace bold** Bold text in this font denotes the messages and responses that the computer automatically prints to the screen.
- VXIpc 700 Series The terms *VXIpc 700 Series* and *VXIpc-700* refer to a series of C-size, single-slot, VXI controllers. Currently, this series consists of the VXIpc-740 and VXIpc-745.
- VXIpc 800 Series The terms *VXIpc 800 Series* and *VXIpc-800* refer to a series of C-size, dual-slot, VXI controllers. Currently, this series consists of the VXIpc-850 and VXIpc-860, with various processors and in different speeds.

How to Use This Documentation Set



Begin by reading this manual, *Getting Started with Your VXIpc Controller for VxWorks*, for basic instructions on setting up the hardware and software. This manual describes how to get started with your kit using the default hardware and software settings, and describes optional settings you can configure using the NI-VXI software.

You received either the *VXIpc 800 Series User Manual* or the *VXIpc 700 Series User Manual* with your kit, depending on the hardware product you purchased. The user manual contains more details about changing the

hardware installation or configuration from the defaults, and using the hardware.

When you are familiar with the material in the previous manuals, you can begin to use the *NI-VXI User Manual*. This manual presents the concepts of VXI and describes how to use NI-VXI. The NI-VXI online help and the *NI-VXI Programmer Reference Manual* contain detailed explanations of the NI-VXI functions. Study the descriptions of each function to fully understand the purpose and syntax of each function. Use the Acrobat Reader program, Version 3 or later, to open, view, and navigate through these manuals online.

Related Documentation

The following documents contain information that you may find helpful as you read this manual:

- ANSI/IEEE Standard 1014-1987, *IEEE Standard for a Versatile Backplane Bus: VMEbus*
- ANSI/IEEE Standard 1155-1993, *IEEE VMEbus Extensions for Instrumentation: VXIbus*
- ANSI/VITA 1-1994, *VME64*
- VXI-6, *VXIbus Mainframe Extender Specification*, Rev. 1.0, VXIbus Consortium
- *VxWorks Programmer's Guide*, 5.3.1 (or later), Wind River Systems, Inc.
- *VxWorks Reference Manual*, 5.3 (or later), Wind River Systems, Inc.

Customer Communication

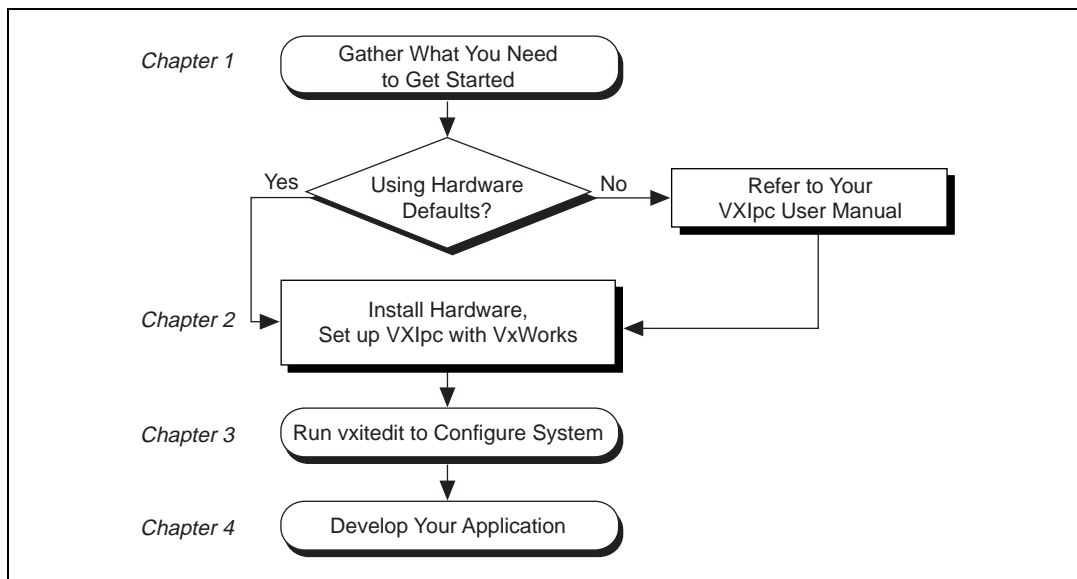
National Instruments wants to receive your comments on our products and manuals. We are interested in the applications you develop with our products, and we want to help if you have problems with them. To make it easy for you to contact us, this manual contains comment and configuration forms for you to complete. These forms are in Appendix C, [Customer Communication](#), at the end of this manual.

Introduction

This chapter describes the VXIpc embedded VXI computers and the NI-VXI software, lists what you need to get started, and gives an overview of the directory structure on your hard drive.

How to Use This Manual

The following flowchart shows where to turn in this manual for more details on configuring and using the hardware and software.



What You Need to Get Started

- VXIpc 800 Series or VXIpc 700 Series embedded controller (hereafter described together as the VXIpc controller)
- VXIbus mainframe

- Keyboard (and included adapter cable)
- Monitor with VGA connector
- NI-VXI software media for the VXIpc embedded controller
- VxWorks Development System

The NI-VXI software is already installed on your VXIpc computer. It is also included on disk in case you need to reinstall your software.

Order the VxWorks Development System on Windows 95/NT for x86 targets from Wind River Systems, Inc. Install and set up the Tornado development environment for VxWorks according to the documentation that comes with the kit.

Hardware Description

The VXIpc controllers are C-size embedded computers based on the Peripheral Component Interface (PCI) bus and Industry-Standard Architecture (ISA). These computers are high-performance, easy-to-use platforms for controlling VXIbus systems, featuring complete VXI functionality through interactive utilities and C function calls. These embedded computers can take advantage of the VXI high-performance backplane capabilities and give you direct control of VXI registers, memory, interrupts, and triggers.

For in-depth details on the VXIpc 800/700 hardware (including a description of the differences between the various models in their respective series), consult the hardware manual that came with your kit, either the *VXIpc 800 Series User Manual* or the *VXIpc 700 Series User Manual*.

Software Description

The NI-VXI bus interface software for the VXIpc embedded controller is already installed on your hard drive. It includes a VXI Resource Manager, an interactive configuration program, libraries of software routines for programming, and an interactive VXIbus control program. You can use this software to seamlessly program multiple-mainframe configurations and ensure software compatibility across a variety of controller platforms. If for some reason you need to reinstall NI-VXI, refer to the instructions at the end of this chapter.

If you decide to change the NI-VXI software configuration from its default settings, refer to Chapter 3, *NI-VXI Configuration Utility*. This chapter describes each field in the **VXIPC Configuration Editor** and the **VXI/VME-MXI-2 Configuration Editor** of the `vxitedit` software utility. Use the *NI-VXI Text Utilities Reference Manual* to get more information about `victext` and the other configuration editors in `vxitedit`. Refer also to the *NI-VXI User Manual*, the *NI-VXI Programmer Reference Manual*, and the NI-VXI online help for thorough details about NI-VXI and the groups of NI-VXI function calls.

The NI-488 software for VxWorks kit is also included, which gives you access to the industry-standard NI-488 software for controlling external GPIB instruments through the GPIB port on the front panel. The GPIB interface on your VXIPC controller is compatible with the NI-488 driver for a variety of operating systems. Please refer to the *GPIB Reference Manual for VXIPC Embedded Controllers and VxWorks* for more information.

Software Notes for VxWorks

The software configuration for NI-VXI for VxWorks offers all the functionality of our NI-VXI drivers for other platforms, within the text-based VxWorks environment. Use `vxitedit` to reconfigure your VXI hardware and `victext` to interactively perform NI-VXI operations accessing your VXI devices.

Programs written using the NI-VXI function library on other platforms are completely portable to NI-VXI for VxWorks. However, VxWorks objects do not contain the symbol `main()`. As a result, when porting NI-VXI from other platforms, replace that function name with a more application-specific symbol in your source code.

Files and Directories Installed on Your Hard Drive

Your hard drive includes a directory called `nivxi` in its root that NI-VXI needs for proper operation. The `nivxi` directory contains several levels of subdirectories that contain help files, tables of information for the driver, and other necessary files.

The hard drive also contains several VxWorks object files, which contain the NI-VXI library and its associated utilities. These files are `nivxi.o`, `vxitedit.o`, `resman.o`, and `victext.o`. Load these files when you boot your VxWorks system so that you can use NI-VXI. Use the VxWorks object loader `ld` to load the files. Refer to Chapter 2, *Setup*, for more information.

Getting Started with VxWorks

The software already installed on your hard drive and on the disks that came with your kit does not include the VxWorks operating system itself. You must contact Wind River Systems, Inc. to order a copy of VxWorks and the Tornado development environment. Use the documentation that comes with VxWorks as your guide for installing, setting up, and learning how to use VxWorks.

Developing for VxWorks

The VxWorks development system is unusual in that the programmer does all coding and compiling on a workstation—the *host* machine—as usual, but then transfers the compiled object files to a *target* machine—in this case, the VXIpc embedded controller. National Instruments supports Windows 95 and Windows NT host machines, although it is possible to use other platforms for this purpose.

The VxWorks development environment, Tornado, makes it easy to manage the unusual host-target configuration. By starting a target server on your host machine, you open connections to the target machine. You use these connections to enter commands on a VxWorks command line, linking and loading your programs as well as issuing the commands from the host to run the application. However, your programs actually execute on the VXIpc target machine.

Software Included with Your VXIpc Controller

The software that comes with your VxWorks-based controller falls under two main categories: host-based and target-based. All the National Instruments software that you need to run NI-VXI on your embedded controller—the development *target*—is already installed on its hard drive. The host software, including the files you need to re-create the target machine if necessary, is provided separately for you to install on your Windows 95/NT-based workstation.

Install the host-side software in this order:

1. Insert the Tornado CD-ROM and follow the instructions to install the Tornado development environment from Wind River Systems.
2. Run the Setup program on Disk 1, *NI-VXI for VXIpc 800/700 Series for VxWorks*, to install the VXIpc board support package, online help, example files, header files, and other required software from National Instruments.

Setup installs several sub-components, including a reference guide for NI-VXI functions, NI-VXI example programs, the VXIpc board support package, and copies of the NI-VXI library files found on the VXIpc hard drive.

Using the VXIpc Board Support Package to Create the VxWorks Operating System

After you receive your copy of VxWorks from Wind River Systems, use the VXIpc board support package (BSP) to build the operating system, which will run on the VXIpc and support NI-VXI. You should have already installed the BSP in the `target\config` subdirectory of your Tornado installation as described in Step 2 of the previous section. Ensure that it was installed correctly, and run Tornado. You should see the VXIpc as an option in the **Project** menu, with three submenus. Build `vxWorks` from the **Common Targets** submenu. This creates the files `vxWorks` and `vxWorks.sym`, which are required to run the operating system.

Depending on your preference, you can have the VxWorks image loaded from the network or from the VXIpc's hard drive. Power on your VXIpc to configure this and other options. After the controller does its normal self-tests, it brings up a countdown timer. To change the boot parameters for the controller, abort this timer and enter `c`.

The most likely parameters you may need to change are as follows:

- **boot device** `ata=0,0` for internal IDE, or
 `esmc` for Ethernet
- **host** host computer's name on the network
- **file name** the location of your VxWorks image
- **inet address** site-specific

To permanently change these options, you can re-make the `bootrom.sys` file by following these steps:

1. Build the `bootrom_uncmp` target in Tornado.
2. Use the `vxcopy` command to transfer the file to a DOS diskette.
3. Boot the VXIpc from this diskette.
4. Copy the file to the hard drive.

The following code illustrates this process:

```
(host)  C:\> vxcopy bootrom_uncmp a:\bootrom.sys
(target) A:\> copy bootrom.sys c:\
```


You may also need to reconfigure parts of the VXIpc BSP. In particular, National Instruments pre-configures three peripherals, and you may need to alter these settings if you add new peripherals. The three devices set up by default are the Ethernet driver, the SCSI driver, and a memory mapping for the National Instruments MITE ASIC.

If you make changes to the hardware in your system—for example, if you add a new PCI or ISA card or alter the interrupt setting on the built-in Ethernet—you may need to change the default settings for these devices.

The SCSI controller configuration should be automatic.

Several constants in the `config.h` file in the BSP directory configure the Ethernet driver. The following table lists the default settings.

Table 1-1. Ethernet Driver Default Settings

Parameter	Constant	Default Setting
I/O Address	<code>#define IO_ADRS_ESMC</code>	0x300
Interrupt Level	<code>#define INT_LVL_ESMC</code>	0x9
Interrupt Vector	<code>#define INT_VEC_ESMC</code>	(<code>INT_NUM_IRQ + INT_LVL_ESMC</code>)
Ethernet Media	<code>#define CONFIG_ESMC</code>	0
Receive Mode	<code>#define RX_MODE_ESMC</code>	0

Mapping the MITE Windows

The National Instruments MITE chip requires mapping two windows of memory—a driver window and a user window—so that NI-VXI can access the MITE registers. The driver window is always 32 KB in size, while the user window size is variable. It defaults to a size of 64 KB, but you can change this value using the `vxitedit` configuration utility (see the [User Window and Driver Window](#) section in Chapter 3, *NI-VXI Configuration Utility*).

If you make a change in your hardware configuration, such as adding a new PCI card, that changes the locations of these windows, use the `findMiteWindows` function to determine their new locations. You can find this function in the object file `findmite.o`, which resides on your target machine's hard drive and in the VXIpc BSP directory. Use the values reported by `findMiteWindows` to reconfigure the memory mappings in your `sysLib.c` file. In addition, if you change the size of the user window

in `vxitedit`, you must match this size to the amount of mapped memory in `sysLib.c`.

Whenever you make any changes to `sysLib.c` or `config.h`, recompile your operating system by building new versions of `vxWorks` and `vxWorks.sym` in the Tornado environment.

Reinstalling the NI-VXI Software

The NI-VXI software for VxWorks is already installed on your VXIpc hard drive. However, if for some reason you need to reinstall the software, perform the following steps.

1. Be sure you have up to 5 MB of free space available to accommodate the NI-VXI software.
2. If necessary—for example, if you reformatted your hard drive—set up the VxWorks boot block by using the `vxsys` command on the drive. You can find more details on this process in the section *Building a Boot Disk/Diskette from MS-DOS* in the *Intel x86* appendix of your *VxWorks Programmer's Guide*.
3. Insert the diskette labeled NI-VXI for VXIpc 800/700 Series for VxWorks into your external disk drive. This disk contains the files you need if you have to rebuild your VXIpc hard drive, including the `nivxi` directory and the four object files for the library and utilities (`nivxi.o`, `vxitedit.o`, `resman.o`, and `victext.o`). This disk also contains the VxWorks loader `bootrom.sys`.
4. Copy the files from this disk onto your VXIpc hard drive. If you choose to put the `nivxi` directory in a location other than the default at the root directory (`C:\NIVXI`, which becomes `/ide0/nivxi` in VxWorks), set the VxWorks environment variable `NIVXIPATH` to indicate the new location.
5. Copy the VxWorks loader, `bootrom.sys`, to the root directory of the target hard drive by using the `vxcopy` command as described earlier in this chapter.
6. Build the files `vxWorks` and `vxWorks.sym` using the VXIpc BSP and the Tornado environment. If you are not planning to access these files over the network when booting VxWorks, copy them to the target hard drive.

Setup

This chapter contains basic instructions for setting up the VXIpc embedded controller and the NI-VXI software.

You can use this material as a guide to quickly configure and operate your VXI system using the VXIpc controller. This chapter assumes you intend to perform a basic configuration as follows:

- You have one VXIbus chassis in which you will use the VXIpc embedded controller as the Resource Manager (logical address 0).
- You will use the NI-VXI software for initialization, configuration, and device interaction.
- You will use the default hardware and software settings.

Step 1. Configure the Hardware

The default hardware settings are acceptable for most typical applications. Refer to Appendix A, *Default Settings*, for a complete listing of the hardware and software default settings.

The *VXIpc 800 Series User Manual* and the *VXIpc 700 Series User Manual* fully describe the configuration and installation of each embedded controller in their respective series. Refer to your VXIpc user manual if you want to try a different hardware configuration, or if you would like more information on a particular setting.

Step 2. Install the Hardware

1. To prevent electrostatic discharge, touch the antistatic plastic package to a metal part of your VXIbus chassis before removing the VXIpc module from the package.



Warning *To protect both yourself and the mainframe from electrical hazards, leave the mainframe off until you finish installing the VXIpc module.*

2. Plug in your chassis, but leave the power turned off.

3. Install the VXIpc controller in the first slot (Slot 0) of the VXI chassis. In its default configuration, the VXIpc automatically detects whether it should be the VXIbus system controller. The VXIbus system controllers operate certain VXIbus lines as required for VXI systems. Verify that no other VXI devices with system controller capability that are located in the same chassis are configured as system controller.



Caution *Having more than one device configured as system controller will damage the VXI system.*

4. For VXI systems that include VME devices, ensure that the VME devices are not configured in the upper 16 KB (starting from 0xC000) of the A16 address space. This region is reserved for VXI device configuration registers, which are used for initializing, configuring, and interacting with VXI devices.
5. Also ensure that no VXI devices in your system are configured for logical address 0, which is the default configuration for the VXIpc controller.
6. To complete your installation, attach cables for any devices you want to connect to your system. Refer to your VXIpc user manual if you are uncertain about any of these connections.
7. Turn on power to the VXI chassis.

Step 3. Set up the VXIpc Controller with VxWorks

1. Build the operating system, if you have not done so already, using the VxWorks development software from Wind River Systems and the VXIpc board support package (BSP). Chapter 1, *Introduction*, explains what you can configure in the BSP. National Instruments provides software and support for a Windows-based host environment.
2. Configure the boot parameters as appropriate for your location. At the VxWorks boot prompt, enter the location of your copy of the VxWorks operating system image, your host computer's IP address, and other applicable parameters. Refer to your *VxWorks Programmer's Guide* for full details about installation.
3. Load the NI-VXI object files after booting your system into the VxWorks operating system. From your `->` prompt (on the host shell by default, or on the target based on your settings in the BSP's `config.h` file), change to the directory where your NI-VXI files are stored. The objects are in the hard drive's root directory by default. Use

the `ld` command to load the NI-VXI objects, as shown in the following code:

```
-> @cd "/ide0/"
-> ld <nivxi.o
-> ld <vxitedit.o
-> ld <resman.o
-> ld <victext.o
```

4. Run the Resource Manager to set up your VXI system by typing `resman` at the prompt. This program automatically finds all other VXI devices in the system configuration and handles all appropriate system setup issues. You must run `resman` every time the chassis power is cycled so your application can access devices in the VXI/VME chassis.
5. You may need to run `vxitedit` to make changes to your system if the default configuration is not suitable for you. Refer to Chapter 3, [NI-VXI Configuration Utility](#), for details about each field you can configure through the `vxitedit` configuration editor.
6. After you finish configuring the system through `vxitedit`, verify the system configuration through the `victext` interactive control utility. For an example of how to use `victext`, refer to the [Device Interaction](#) section in Chapter 4, [Developing Your Application](#).

NI-VXI Configuration Utility

This chapter contains instructions for using the VXI Resource Editor to configure the VXIpc embedded computer and the VXI-MXI-2 or VME-MXI-2 chassis extender.

`vxitedit` is the VXI resource editor program that you use to configure the system and to edit the manufacturer name and ID numbers, the model names of VXI and non-VXI devices in the system, and the system interrupt configuration information. This program also displays the system configuration information generated by the Resource Manager.

Running the `vxitedit` Configuration Utility

Type `vxitedit` to run the resource editor program. `vxitedit` presents a list of several configuration editors. Select the **VXIpc Configuration Editor** from the main menu. Later in this chapter you will find instructions for using the **VXI/VME-MXI-2 Configuration Editor**, in case your system contains a VXI-MXI-2 or VME-MXI-2 chassis extender.

Most of the features on the VXIpc controller and VXI/VME-MXI-2 are configurable through software, using `vxitedit`, rather than through hardware switches or jumpers on the boards themselves. In addition, the `vxitedit` utility can override some of the hardware settings.

The rest of this chapter describes only the features of the **VXIpc Configuration Editor** and the **VXI/VME-MXI-2 Configuration Editor**. For instructions on using the other editors, refer to the *NI-VXI Text Utilities Reference Manual*.

VXIpc Configuration Editor

The first three options under the **VXIpc Configuration Editor** are:

- **Logical Address Configuration Editor**
- **Device Configuration Editor**
- **Bus Configuration Editor**

When making changes to the VXIpc controller through these editors, remember that the changes do not take effect until you commit them by selecting the **Update Current Configuration** option.

Before proceeding to a description of each field in these editors, review the remaining four options of the **VXIpc Configuration Editor**. These options directly relate to how you can use the changes you make using the configuration editors, which are described after the options.

Update Current Configuration

Use this option to write the configuration settings to the VXIpc controller EEPROM and files used by NI-VXI. This option configures the VXIpc controller to be consistent with the configuration EEPROM. Notice that some of the configuration settings cannot take effect until you reset the machine, either by using the reset button or by turning the power off and on again.

Record Configuration to File

Use this option to save your configuration settings to a file. Notice that this option does *not* write the configuration settings to the VXIpc controller configuration EEPROM.

If you want to update the VXIpc configuration settings, use the **Update Current Configuration** option instead.

Load Configuration from File

You can use this option to load your configuration settings from a file. This action only updates the configuration settings in your editor. It does *not* write the configuration settings to the VXIpc configuration EEPROM. Use the **Update Current Configuration** option to make the changes take effect.

Revert to Current Configuration

If you made changes to the configuration settings without committing those changes—writing to configuration EEPROM—you can use this option to revert the configuration settings to the values they had before you made the changes.



Note

You can successfully revert only if you have *not* yet selected the Update Current Configuration option.

Logical Address Configuration Editor

The **Logical Address Configuration Editor** has options for the device's logical address, device type, address space, VXI shared memory, and the resource manager delay. The following paragraphs describe the options you can select for each of the fields.

Logical Address

This parameter sets the logical address of the VXIpc controller. The following table shows the allowable range of values and the default value.

Logical Address Range	Default Value
0 to 254	0

Device Type

This field indicates the classification of the VXIpc controller. The default value is **MBD**, designating a message-based device. The following table shows the available options.

Classification	Setting
Extended Device	EXT
Message-Based Device	MBD
Register-Based Device	RBD

The device type affects only the contents of the **Device Class** field in the Device Type register. The functionality of the other registers does not change.

Address Space

This field indicates the addressing mode(s) of the device's operational registers. You can configure the VXIpc controller in one of three ways. The default addressing mode is for **A16** space only. Your other options are **A16/A24** and **A16/A32**.

Notice that options relating to VXI shared memory are disabled when the **Address Space** option is set to **A16**. Only if you select **A16/A24** or **A16/A32** are the following options relevant:

- **VXI Shared RAM Size**

- **Shared RAM Pool**
- **Upper/Lower Half Window Byte Swapping**
- **Upper/Lower Half Window Address Mapping**

VXI Shared RAM Size

This field indicates the amount of RAM (in bytes) that is shared in either A24 or A32 space. This determines the *total* shared RAM size. Setting this field to -1 detects how much memory you have installed in your VXIpc controller and requests the same amount of A24 or A32 space. However, if you have more than 8 MB installed in your VXIpc, you need to change the **Address Space** field to use A32 space.

Shared RAM Pool

This field indicates the size of memory in kilobytes that is allocated on NI-VXI startup. This is physically contiguous memory that can be dual-ported on the VXIbus.

The shared RAM pool is used by `VXImemAlloc()` function calls. For information on the `VXImemAlloc()` function, refer to the *NI-VXI User Manual* and the *NI-VXI Programmer Reference Manual*.

If you make a change to this setting, you must restart the computer to enable the change.

Memory Range	Default Value
0 to 65535 KB	0 KB

Advanced Shared RAM Settings

The VXI shared RAM is divided into two halves, or *windows*. You can select the byte order and mapping scheme for each half independently. These configuration options are intended for more advanced users.

Upper/Lower Half Window Byte Swapping

This field indicates whether byte swapping should be performed for slave accesses to this half of the VXI shared RAM space. For example, if the native byte order of the shared RAM is Intel (Little Endian), and you want to present data to the VXIbus in Motorola (Big Endian) byte order, you need to enable byte swapping for the appropriate window half. Byte swapping is disabled for both windows by default.

Upper/Lower Half Window Address Mapping

This field determines if the upper/lower half windows map to the same address or different addresses in system memory.

The default setting maps each half window to a unique local address on the VXIpc controller. If you change this setting, the buffer in system RAM is dual-ported to the VXIbus in both Little Endian and Big Endian byte order. The setting of the **Byte Swapping** option for each half window determines whether the byte order is Little Endian or Big Endian.

Resource Manager Delay



Note

This field is effective only when the VXIpc controller is at its default logical address of 0. This logical address is required for the Resource Manager.

This field specifies the time in seconds that the Resource Manager (RM) waits before accessing any other VXIbus device's A16 configuration registers.

RM Delay Range	Default Value
0 to 65535 s	5

Device Configuration Editor

The **Device Configuration Editor** configures options for remote controller communication and local device settings.

System IRQ Level

Remote controllers can report events such as triggers and DMA to the VXIpc through a VXI IRQ line. This field selects which VXI IRQ level the remote controllers should use to report such events.

Interrupt Request Levels	Default Value
1 to 7 or disabled	Disabled



Note

When the system IRQ line is disabled, the remote controller functionality is not available. Enable the system IRQ line if you are using a multi-mainframe system.

The VXI IRQ designated as system IRQ line cannot be disabled using the `disablevxiint` or `disablevxitosignalint` functions. The VXIpc controller always acknowledges it automatically when it is the Resource Manager.

Servant Area Size

This field designates the servant area size, which is supplied to the Resource Manager in response to the *Read Servant Area* command (if the VXIpc controller is *not* the Resource Manager in your system). The servant area size is an 8-bit value (0 through 255) that indicates the servant area. The servant area begins at the logical address following the VXIpc controller's logical address, and includes *N* contiguous logical addresses, where *N* is the value of the servant area size. This field is meaningful only when the VXIpc is configured as a message-based device.

Servant Area Range	Default Value
0 to 255	0



Note

If the VXIpc controller is the Resource Manager (Logical Address 0), this setting is irrelevant.

Number of Handlers

This field gives the number of interrupt handlers that the VXIpc controller supports.

Interrupt Handlers	Default Value
0 to 7	1

Number of Interrupters

This field gives the number of interrupters that the VXIpc controller supports.

Interrupters	Default Value
0 to 7	0

Protocol Register

This field specifies the contents of the Protocol register, indicating which protocols the device supports. This field is meaningful only when the VXIpc controller is configured as a message-based device. The default value is 0xFF0 (Commander, Signal Register, Master).

Read Protocol Response

This field specifies the response value to a *Read Protocol* command received by the VXIpc controller from the Resource Manager (if the VXIpc is *not* the Resource Manager in your system). This field is meaningful only when the VXIpc is configured as a message-based device. The default value is 0x8448 (Response Generation, Event Generation, Programmable Handler, Word Serial Trigger, Instrument, Extended Longword Serial, Longword Serial).

Bus Configuration Editor

Use the **Bus Configuration Editor** to configure VXI bus settings, PCI bus settings, and bus arbitration settings for the VXIpc controller.

VXI Bus Timeout

The Bus Timeout (BTO) is a watchdog timer for transfers on the VXIbus. After the specified amount of time has elapsed, the BTO circuitry terminates a VXIbus cycle if no slave has responded. This feature is applicable only if the VXIpc controller you are configuring is a VXI Slot 0 device. You should disable the BTO of any other non-Slot 0 devices residing in the mainframe.

The lowest value in the allowable range is 15 μ s and the highest is 256 ms. The default value is 500 μ s.

Automatic VXIbus Retry Protocol

When the **Enable Auto Retry protocol** option is active, the VXIpc controller can recognize and send the VXIbus retry protocol. If you disable this option, a retry is mapped to a bus error response. By default this option is enabled.

Automatic VXI Slave Cycle Retry

- ◆ This option is not available in the VXIpc 700 Series.

The VXIpc 800 Series has an automatic retry feature for cycles that map from the VXIbus to the PCI bus on the VXIpc 800. You can use the **Automatically retry VXI slave cycles** field to enable or disable this option. By default this option is enabled on the VXIpc 800 Series and disabled on the VXIpc 700 Series.

Normally, when a cycle maps from the VXIbus to the PCI bus, any retry response received on the PCI bus is passed to the VXIbus. When this feature is enabled, the VXIpc 800 automatically retries any PCI cycle when the PCI host responds to a cycle with a retry. The VXIpc 800 automatically continues to retry the PCI cycle until it receives either a Disconnect or Target-Abort response, which it then passes to the VXIbus. This behavior is the default because many VXIbus masters do not support VXI retries. If the VXIbus master does support retries, you may find it beneficial to disable this feature. With this feature disabled, you can lower the value of the **VXI Bus Timeout** because there is no delay from the inward cycles being retried.

**Note**

The VXIpc 800 has a limit on the number of automatic retries it will perform on any one cycle. If the limit is exceeded and the VXIpc 800 receives another retry, it will pass a retry or BERR (depending on whether the Enable Auto Retry protocol option is active or disabled) to the VXIbus even though the Automatically retry VXI slave cycles option is active.

A24/A32 Write Posting

The VXIpc controller can increase performance with its capability to post write cycles from the VXIbus. You should post write cycles only to addresses that cannot return a BERR signal, because the BERR will not be reported to the originating master. By default, this option is enabled.

The A24/A32 write posting field affects write cycles to the VXIpc controller via its requested memory space from the VXIbus. When this option is enabled, the VXIpc controller completes a VXIbus write cycle before writing the data from the cycle to the local destination on the VXIpc.

VXI Transfer Limit

You can use the **Transfer Limit** field to set how many data transfers the VXIpc controller will perform on the VXIbus before releasing it to another master device that is requesting use of the bus.

The available options you can choose from are 16, 64, and 256 transfers. If you do not want the VXIpc to hold the VXIbus long enough to perform 256 transfers (the default value), you can select a smaller value for this field.

Arbiter Type

You can use the **Arbiter Type** feature to configure the VXIpc controller as either a Priority or Round Robin VMEbus arbiter. This option is applicable only if the VXIpc you are configuring is a VXI Slot 0 device. The default value is **Priority**.

When configured for Priority arbitration, the VXIpc grants the bus to the highest pending bus request level. If you select **Round Robin** arbitration mode, the VXIpc grants the bus to the next highest bus request level after the level of the previous bus owner. This effectively gives the same priority to each bus request level. Refer to the VMEbus specification for more information on the different types of arbiters.

Request Level

The VXIpc controller uses one of the four VXIbus request levels (0 to 3) to request use of the VXI Data Transfer Bus (DTB). The VXIpc requests use of the DTB whenever a local cycle maps into a VXIbus cycle.

The VXIpc uses VXIbus request level 3 by default, as required by the VXIbus specification. This setting is suitable for most VXIbus systems. However, you can change the VXIpc to use any of the other three request levels (0, 1, or 2) by changing the setting of the **Request Level** field. You may want to change request levels to change the priority of the VXIpc controller's request signal. For more information, refer to the VMEbus specification.

VXI Fair Requester

The VXIpc controller is always a Release On Request requester. However, you can configure whether the VXIpc acts as either a fair or unfair requester on the VXIbus. By default the VXIpc controller operates as an unfair requester. For more information on the different types of requesters, refer to the VMEbus specification.

Arbiter Timeout

An arbitration timeout feature is available on the VXIpc controller when it is acting as the VMEbus arbiter. This feature applies only to a VXI Slot 0 VXIpc. By default this option is disabled.

If you enable this feature, the timer begins when the arbiter circuit on the VXIpc drives one of the BGOUT lines on the backplane. If no device takes

over the bus within the timeout limit, the BGOUT is removed and the bus is either idle or granted to another requester.

User Window and Driver Window

The VXIpc controller driver requires the use of two PCI windows—a user window and a driver window. Calling the `mapvxiaddress()` function allocates regions of the user window to your application. `vxipeek()` and `vxipoke()` accesses are performed through this window. NI-VXI uses the driver window to perform high-level functions such as `VXIIn()` and `VXIOut()`, and to access MITE registers on the VXIpc controller.

The windows are mapped to PCI base address registers and determine the amount of PCI memory space the VXIpc requests from the PCI system during initialization. You can set the window base, window size and whether the window resides above or below the 1 MB address space boundary.

Window Size

The amount of space you can allocate for the user window is system dependent. By changing the value of the **Size** parameter, you can select the size of the user window (minimum of 4 KB, maximum of 2 GB). The more you increase the size of the user window, the larger the window you can map in `mapvxiaddress()`.

If you change this setting, you must reconfigure the memory mapping settings in `syslib.c` and recompile the VxWorks image. Refer to the [Using the VXIpc Board Support Package to Create the VxWorks Operating System](#) section in Chapter 1, *Introduction*, for details on how to do this.

You can also disable this option. Disabling the user window causes the VXIpc to request the minimum amount of address space on the PCI bus. With the window disabled, you cannot perform any low-level function calls such as `vxipeek()`, `vxipoke()`, and `mapvxiaddress()`.

The default setting for the user window is set at 64 KB. National Instruments recommends that you have a user window of at least this value. If you are going to initiate transfers to a wide variety of addresses in both A24 and A32, you should increase the size of the user window.

The size of the driver window is system defined and is not user configurable.

Below 1 MB

This field is not used by the NI-VXI for VxWorks driver and is disabled. It is used with other operating systems, such as DOS. Ignore this setting if you are using VxWorks.

Window Base

This field is not used by the NI-VXI for VxWorks driver and is disabled. It is used with other operating systems, such as DOS. Ignore this setting if you are using VxWorks.

VXI/VME-MXI-2 Configuration Editor

If your system contains a VXI-MXI-2 or a VME-MXI-2, you can configure it through the vxitedit utility. Before running the **VXI/VME-MXI-2 Configuration Editor**, you must run resman.



Note

*Throughout this section, the term **VXI/VME-MXI-2** denotes that the information applies equally to the **VXI-MXI-2** and the **VME-MXI-2**.*

When you start the **VXI/VME-MXI-2 Configuration Editor**, it prompts you for the logical address of the VXI/VME-MXI-2 that you want to configure. You can use the **Resource Manager Display** option in vxitedit to determine the logical address your VXI/VME-MXI-2 is using.

After finding a VXI/VME-MXI-2, the **VXI/VME-MXI-2 Configuration Editor** prompts you to match the type of address—VXI-MXI-2 or VME-MXI-2—installed in your system. You can then use normal vxitedit commands such as `help`, `list`, and `modify` to display the current settings for your VXI/VME-MXI-2 and to change the configuration if necessary.

Logical Address

You can set or modify the logical address of the VXI/VME-MXI-2 either within the **VXI/VME-MXI-2 Configuration Editor** itself or with the onboard 8-position DIP switch. To select the configuration method you prefer, use the **Logical Address Source** options.

The default selection is the **Switch** option. Notice that the **Logical Address** is read only. In this option you need to change the hardware switch setting on the VXI/VME-MXI-2 itself if you want to change the logical address.

If you select **Soft LA** for this option, you can then use the **Logical Address** feature to select a logical address within the range of 1 to 254. If you use

this option, the hardware switch setting has no effect and you must use the **VXI/VME-MXI-2 Configuration Editor** to change the logical address.

Address Space and Requested Memory

The VXI/VME-MXI-2 requires at least 16 KB of address space in A24 space or at least 64 KB in A32 space. Use the **Address Space** field to select whether you want to use A24 space or A32 space. Use the **Requested Memory** field to set the amount of memory space that the VXI/VME-MXI-2 will request. You can select up to 8 MB in A24 space and up to 2 GB in A32 space. The default setting uses the minimum requirement of 16 KB in A24 space.

These options are necessary if you change the amount of DRAM installed on the VXI/VME-MXI-2. The amount of memory you set with the **Requested Memory** field should match the amount of DRAM installed on the VXI/VME-MXI-2. If no DRAM is installed, keep the default setting of 16 KB. Notice that the smallest valid amount in A32 space is 64 KB.



Caution *If you install DRAM in the VXI/VME-MXI-2, do not attempt to use the first 4 KB of memory space. This 4 KB space maps to the registers on the VXI/VME-MXI-2 and does not access onboard DRAM. Accessing this region will cause your VXI/VME-MXI-2 to behave incorrectly.*

If you do not want to lose 4 KB of DRAM you can get around this limitation by increasing the **Requested Memory** setting to double the amount that is installed on the VXI/VME-MXI-2, because the DRAM is aliased throughout the remainder of the requested memory space. The DRAM should then be accessed in the upper half of the requested memory space.

A16 Write Post and A24/A32 Write Posting

The VXI/VME-MXI-2 can increase performance with its capability to post write cycles from both the MXIbus and the VXI/VMEbus. Write cycles should be posted only to devices that cannot return a *BERR* signal, because the *BERR* will not be reported to the originating master.

Set the appropriate option if you want to use either A16 or A24/A32 write posting. By default, both options are disabled.

The A16 write posting option affects only write cycles that map through the A16 window from the VXI/VMEbus to the MXIbus and vice versa. A16 write cycles in VXI configuration space are never posted regardless of the setting of this field.

The A24/A32 write posting option affects write cycles that map through the A24 window and A32 window from the VXI/VMEbus to the MXIbus and vice-versa. This field also affects write cycles to the VXI/VME-MXI-2 itself via its requested memory space from both the VXI/VMEbus and the MXIbus. For more information on the A16, A24, and A32 windows, refer to VXI-6, the *VXIbus Mainframe Extender Specification*.

Interlocked Mode

Interlocked arbitration mode is an optional mode of operation in which at any given moment the system can perform as if it were one large VXI/VMEbus mainframe with only one master of the entire system—VXI/VMEbus and MXIbus. This mode of operation prevents deadlocks by interlocking all arbitration in the VXI/VMEbus/MXIbus system. By default, this option is disabled, which puts the VXI/VME-MXI-2 in normal operating mode.

In normal operating mode (non-interlocked), multiple masters can operate simultaneously in the VXI/VMEbus/MXIbus system. A deadlock occurs when a MXIbus master requests use of a VXI/VMEbus resource in another VXI/VMEbus mainframe while a VXI/VMEbus master in that mainframe is in the process of requesting a resource across the MXIbus. When this situation occurs, the VXI/VMEbus master must give up its bus ownership to resolve the conflict. The *RETRY* signal is used to terminate the transfer on the VMEbus; however, devices in the VXI/VMEbus mainframe must be able to detect a *RETRY* caused by a deadlock condition so that they can retry the operation. Any master device that cannot detect the retry protocol will interpret the response as a *BERR* signal instead.

The VXI/VME-MXI-2 is factory configured for normal operating mode (non-interlocked). If MXIbus transfers will be occurring both into and out of the mainframe and the VXI/VMEbus modules in your system do not have the capability for handling retry conditions, you may want to configure the VXI/VME-MXI-2 for interlocked arbitration mode. In this mode, no software provisions for deadlock conditions are required. However, parallel accesses in separate VXI/VMEbus mainframes are no longer possible, and system performance may be lower than in normal operating mode.

In a VXI/VMEbus/MXIbus system, you can configure some VXI/VME-MXI-2 modules for normal operating mode and others for interlocked arbitration mode. The VXI/VMEbus mainframes configured in interlocked arbitration mode will be interlocked with each other and the mainframes configured for normal operating mode can perform transfers in parallel.

This type of system configuration is recommended if you have one of the following situations:

- A VXI/VMEbus mainframe with only slave devices and no masters. Without bus masters, there is no chance for deadlock. You can configure the VXI/VME-MXI-2 devices in this mainframe for normal operating mode.
- A VXI/VMEbus mainframe with both masters and slaves, but in which the masters communicate only with the slaves in their mainframe. The masters never attempt transfers across the MXIbus, so there is no chance for deadlock when a MXIbus master attempts a transfer into the VXI/VMEbus mainframe. You can configure the VXI/VME-MXI-2 devices in this mainframe for normal operating mode.
- A VXI/VMEbus mainframe in which all masters that perform cycles across the MXIbus support the VME64 *RETRY* protocol. You can configure the VXI/VME-MXI-2 devices in this mainframe for normal operating mode because all masters that could cause a deadlock will automatically retry the operation.

VMEbus System Controller

You can use the **System Controller** setting to override the jumper setting on the VXI-MXI-2. (The VME-MXI-2 does not have an onboard jumper setting for this option.) When the **Auto** setting (the default setting) is active, the onboard jumper setting determines if the VXI-MXI-2 is the VXI Slot 0 device. For more information, refer to your hardware user manual or your MXI-2 getting started manual.

Otherwise, choose either the **Yes** or **No** option. Notice that selecting either of these options overrides the onboard jumper setting on the VXI-MXI-2, so it will not matter how the jumper is set. You would need to run the **VXI/VME-MXI-2 Configuration Editor** again if you decide to change the VMEbus System Controller (VXI Slot 0) setting at a later time.



Caution *Do not install a VXI/VME-MXI-2 configured for VMEbus System Controller (VXI Slot 0) into another slot without first reconfiguring it to either Non-Slot 0 or automatic configuration. Neglecting to do this could damage the VXI/VME-MXI-2, the VXI/VMEbus backplane, or both.*

This means that you should use either the No or Auto setting for this field. For the VXI-MXI-2, you also have the option of changing the hardware jumper setting.

VXI/VME Auto Retry

The VXI/VME-MXI-2 has an automatic retry feature for cycles that map from the VXI/VMEbus to the MXIbus. By default this option is disabled.

Normally, when a cycle maps from the VXI/VMEbus to the MXIbus, any retry response received on the MXIbus is passed to the VXI/VMEbus. If you enable the **Auto Retry** feature, the VXI/VME-MXI-2 automatically retries any MXI cycle that receives a retry response instead of passing a retry response back to the VXI/VMEbus. The VXI/VME-MXI-2 automatically continues to retry the MXI cycle until it receives either a *DTACK* or *BERR* response, which it then passes to the VXI/VMEbus.

Notice there is a limit on the number of automatic retries the VXI/VME-MXI-2 will perform on any one cycle. If the limit is exceeded and the VXI/VME-MXI-2 receives another retry, it will pass a retry back to the VXI/VMEbus even though **Auto Retry** is enabled.

VXI/VME Bus Timeout Value

The VXI/VMEbus Bus Timeout (BTO) is a watchdog timer for transfers on the VMEbus Data Transfer bus. After the specified amount of time has elapsed, the BTO circuitry terminates a VMEbus cycle if no slave has responded. The VXI/VME-MXI-2 must provide the VXI/VMEbus BTO for proper operation because when a MXIbus cycle is involved, the VXI/VMEbus timeout must be disabled and the MXIbus BTO enabled. You should disable the BTO of any other BTO module residing in the mainframe. If this is not possible, set its **VXI Bus Timeout** field to its maximum setting to give the MXIbus cycles as much time as possible to complete.

The lowest value in the allowable range is 15 μ s and the highest value is 256 ms. The default value is 125 μ s.

VXI/VME Transfer Limit

You can use this feature to control how many data transfers the VXI/VME-MXI-2 will perform on the VXI/VMEbus before releasing it to another master device that is requesting use of the bus.

You can choose 16, 64, or 256 transfers. If you do not want the VXI/VME-MXI-2 to hold the VXI/VMEbus long enough to perform 256 transfers (the default value), select a smaller value for this field.

Arbiter Type

You can use the **Arbiter Type** feature to configure the VXI/VME-MXI-2 as either a Priority or Round Robin VMEbus arbiter. This field is applicable only if the VXI/VME-MXI-2 you are configuring is a VMEbus System Controller (VXI Slot 0) device. The default value is **Priority**.

When configured for **Priority** arbitration, the VXI/VME-MXI-2 grants the bus to the highest pending bus request level. If you select **Round Robin** arbitration mode, the VXI/VME-MXI-2 grants the bus to the next highest bus request level after the level of the previous bus owner. This effectively gives the same priority to each bus request level. Refer to the VMEbus specification for more information on the different types of arbiters.

Arbiter Timeout

An arbitration timeout feature is available on the VXI/VME-MXI-2 when it is acting as the VMEbus arbiter. This feature applies only to a VXI Slot 0 (VMEbus System Controller) VXI/VME-MXI-2. By default this option is enabled.

The timer begins when the arbiter circuit on the VXI/VME-MXI-2 drives one of the *BGOUT* lines on the backplane. If no device takes over the bus within the timeout limit, the *BGOUT* is removed and the bus is either idle or granted to another requester.

Request Level

The VXI/VME-MXI-2 uses one of the four VMEbus request levels (0 to 3) to request use of the VME Data Transfer Bus (DTB). The VXI/VME-MXI-2 requests use of the DTB whenever an external MXIbus device, such as a PCI-based computer with a PCI-MXI-2 interface, attempts a transfer that maps into the VXI/VMEbus mainframe.

The VXI/VME-MXI-2 uses VMEbus request level 3 by default, as required by the VXIbus specification. This is suitable for most VXIbus systems. However, you can change the VXI/VME-MXI-2 to use any of the other three request levels (0, 1, or 2) by changing the **Request Level** setting. You may want to change request levels to change the priority of the VXI/VME-MXI-2 request signal. For more information, refer to the VMEbus specification.

VXI/VME Fair Requester

The VXI/VME-MXI-2 is always a Release On Request requester. However, you can configure whether the VXI/VME-MXI-2 acts as either a fair or unfair requester on the VXI/VMEbus. By default the VXI/VME-MXI-2 operates as a fair requester. For more information on the different types of requesters, refer to the VMEbus specification.

MXI Bus System Controller

You can determine whether the VXI/VME-MXI-2 acts as the MXI Bus System Controller. When the **Auto** setting (the default setting) is active, the VXI/VME-MXI-2 automatically can sense from the MXIbus cable whether it should be the controller.

You can select either **Yes** or **No** to manually determine if the VXI/VME-MXI-2 should be the MXI Bus System Controller. You must still be certain to cable the MXIbus system appropriately when you make either of these selections.

MXI Auto Retry

The VXI/VME-MXI-2 has an automatic retry feature for cycles that map from the MXIbus to the VXI/VMEbus. This feature works in the same manner as the **VXI Auto Retry** feature described previously. By default, this option is disabled.

Normally, when a cycle maps from the MXIbus to the VXI/VMEbus, the VXI/VMEbus passes any retry response it receives to the MXIbus. If you enable this feature, the VXI/VME-MXI-2 automatically retries any VXI/VME cycle that receives a retry response instead of passing a retry response on to the MXIbus. The VXI/VME-MXI-2 automatically continues to retry the VXI/VME cycle until it receives either a *DTACK* or *BERR* response, which it then passes to the MXIbus.

Notice that the VXI/VME-MXI-2 has a limit on the number of automatic retries it will perform on any one cycle. If the limit is exceeded and the VXI/VME-MXI-2 receives another retry, it will pass a retry back to the MXIbus even though **VXI Auto Retry** is enabled.

MXI Bus Timeout Value

The MXIbus Bus Timeout (BTO) is a watchdog timer for transfers on the MXIbus. The MXIbus BTO unit operates only when the VXI/VME-MXI-2 is acting as the MXIbus System Controller. The functionality of this feature

is similar to that of the **VXI Bus Timeout** feature described previously. The options range from 8 μ s to 128 ms, with a default value of 1 ms.

After the specified amount of time has elapsed, the BTO circuitry terminates a MXIbus cycle if no slave has responded. The BTO circuitry is automatically deactivated when the VXI/VME-MXI-2 is not acting as the MXIbus System Controller. The BTO is also disabled when the current MXIbus cycle maps to the VXI/VMEbus through a VXI/VME-MXI-2.

Transfer Limit

You can use this feature to control how many data transfers the VXI/VME-MXI-2 will perform on the MXIbus before releasing it to another master device that is requesting use of the bus. The default setting holds the MXIbus for an unlimited period of time.

The other options you can choose from are 16, 64, and 256 transfers. If you do not want the VXI/VME-MXI-2 to hold the MXIbus for an unlimited period of time, you can select one of these values.

MXI CLK10 Signal

The VXI-MXI-2 can either receive or drive the MXIbus CLK10 signal. In its default setting, the VXI-MXI-2 uses the switch setting of S7 to determine the signal direction.

- ◆ **VME Users**—This option is not applicable to the VME-MXI-2.

You can use the **Drive** or **Receive** options to override the setting of S7 and control the direction of the MXIbus CLK10 signal. If you set the VXI-MXI-2 to receive the MXIbus CLK10 signal, configure the W3 jumper setting to use the MXIbus as the source for generating the VXIbus CLK10 (applicable only if the VXI-MXI-2 is a Slot 0 device). When you set the VXI-MXI-2 to drive the MXIbus CLK10, it uses the VXIbus CLK10 as the source. In this case, change the jumper setting so that it does *not* use the MXIbus CLK10 as the source for the VXIbus CLK10.



Caution *Do not configure more than one MXIbus device to drive MXI CLK10. Setting up a second device to drive MXI CLK10 could damage the device.*

Parity Checking

By default, MXIbus parity checking is enabled and should not be disabled under normal circumstances. MXIbus parity is always generated regardless if checking is enabled or disabled.

MXI Fair Requester

You can configure the VXI/VME-MXI-2 as either a fair or unfair requester on the MXIbus. In its default setting (disabled), the VXI/VME-MXI-2 can request the bus at any time. If you enable this option, the VXI/VME-MXI-2 will request the MXIbus only when there are no requests pending from other MXIbus masters. This prevents other MXIbus masters from being starved of bandwidth.

Developing Your Application

This chapter discusses the software utilities you can use to start developing applications that use the NI-VXI driver.

After verifying your system configuration, you can begin to develop your VXI application. Be sure to check the `README` file for the latest application development notes and changes.

Your software includes several utilities to assist you in your system development. These include `resman`, `vxitedit`, and `victext`. You can also access several examples to learn how to use NI-VXI for certain tasks.

Configuration

The configuration utilities in your kit are `resman` and `vxitedit`. `resman` is the application that performs VXI Resource Manager functions as described in the VXIbus specification. Its most important functions include configuring all devices on the VXI backplane for operation and allocating memory for devices that request it.

**Note**

Power cycling resets all devices, so you need to run `resman` every time chassis power is cycled to reconfigure them.

After `resman` has detected and configured all VXI devices, you can view specific information on each device in your system by using the `vxitedit` utility. This utility includes a **Resource Manager Display**, which contains a description for each device, including each VXI device's logical address.

Although the VXIpc controller is configured in hardware and software for the most typical configuration, you may want to change the default settings to best suit your application. Use the **VXIpc Configuration Editor** or the **VXI/VME-MXI-2 Configuration Editor** available in `vxitedit` to view or change the settings for your devices.

Device Interaction

You can interact with your VXI devices by using the `victext` utility. This utility lets you interactively control your VXI devices.

Try the following in `victext`.

In the **Command** entry field type:

```
help vxiinreg
```

This help file shows you the syntax for this command, which reads VXI device configuration registers. The first argument is a logical address, and the second is the offset of the VXI device configuration register to be read.

Type:

```
vxiinreg 0,0
```

This should return a value, such as:

```
Return Status (0): SUCCESS.  
value = 0x9ff6
```

If the value ends with `ff6`, you have successfully read the National Instruments manufacturer ID from the VXIpc controller's ID register.

You may now want to read the configuration registers from other VXI devices in your system using the command `vxiinreg`. This command accesses only the upper 16 KB of A16 space. Try reading a register from each of the devices listed in the **Resource Manager Display** of `vxitedit`. In this way, you can verify that your VXIpc can access each of the devices in your VXI system successfully.

You can also access VXI and VME devices that are configured in A16, A24, and A32 address space by using the `vxiin` or `vxiout` commands. For more information regarding `victext` operation and commands, refer to the *NI-VXI Text Utilities Reference Manual*.

VME Support

The `resman` utility identifies and configures VXI devices, but does not configure VME devices. The VME specification does not define the initialization and configuration procedures that the VXI specification requires.

To access VME devices in your system, you must configure NI-VXI to see these devices by using the **Non-VXI Device Configuration Editor** in vxitedit.

**Note**

Be sure to indicate the frame number for each VME device you add. The frame number is the logical address of the controller for the chassis in which the device is located. For a single-frame system, the frame number is 0.

For each address space in which your device has memory, you must create a separate pseudo-device entry with a logical address between 256 and 511. For example, a VME device with memory in both A24 and A32 spaces would require two entries. You can also specify which interrupt level(s) the device uses. VXI and VME devices cannot share interrupt levels.

resman uses this information to properly configure the various device-specific VME address spaces and VME interrupt lines. For more information on configuring VME devices in your VXI system, refer to the *NI-VXI Text Utilities Reference Manual*.

Programming with VXI

NI-VXI is the National Instruments proprietary interface for programming VXI instruments. Using NI-VXI gives you register-level access of VXI instruments as well as messaging capability to message-based devices. You can service asynchronous events, such as triggers and signals, and also assert them.

The best way to learn how to program with NI-VXI is by reviewing the example programs included in your software. The `Examples` directory on your host machine contains examples for many different types of applications. If you are just getting started, you should first learn how to access registers with high-level calls and send messages with word serial functions. The appropriate NI-VXI examples are called `vxihigh.c` and `vxibs.c`. You can use the other examples as you try more advanced techniques. Consult the *NI-VXI User Manual* for additional information on these topics.

Table 4-1 summarizes the topics addressed by the example programs.

Table 4-1. NI-VXI Examples

Coverage	NI-VXI Example
Message-Based Access	<code>vxibs.c</code>
High-Level Register Access	<code>vxihigh.c</code>
Low-Level Register Access	<code>vxilow.c</code>
Sharing Memory	<code>vximem.c</code>
Interrupt Handling	<code>vxiiint.c</code>
Trigger Handling	<code>vxitrig.c</code>

Compiling Your C Program

You can use the sample programs included with the NI-VXI software as a starting point to develop your own C program that uses NI-VXI functions. First, look over and compile the sample program using the makefile provided to get familiar with how the functions operate. The example program is broken into multiple files, and each file shows how to use different groups of functions. You can then modify the sample program to try out different aspects of the NI-VXI software.

The easiest way to compile the sample program is to use the makefile included with the NI-VXI software. The makefile uses GNU `cc`, which comes with the VxWorks development kit from Wind River Systems. The `gcc` executable is `cc386`.

Symbols

You may need to define some symbols so that the NI-VXI library can work properly with your program. You can define the symbols using `#define` statements in the source code or you can use the `-D` option in your compiler. If you use `#define` statements, you must define the symbols before including the NI-VXI header file `nivxi.h`. If you use the makefiles to compile the sample program, the makefile already defines the necessary symbols.

The `VXIVXWORKS` symbol is usually required. However, the `BINARY_COMPATIBLE` symbol is optional. This symbol makes the application binary compatible with external controllers, such as the National Instruments PCI-MXI-2 external controller. Using this option may

cause a slight performance degradation when using low-level VXIbus access functions.



Note

National Instruments currently supports VxWorks only on embedded controllers, so the `BINARY_COMPATIBLE` flag is not necessary.

If you define these symbols in your source code, your source code should look something like the following sample code:

```
#define VXIWVXWORKS
#define BINARY_COMPATIBLE
.
.
.
#include <nivxi.h>
```

If you define these symbols using the `-D` compiler option, you should specify the following when invoking the compiler.

```
-DVXIVXWORKS -DBINARY_COMPATIBLE
```

Refer to the documentation that came with your compiler package for detailed instructions about using the compiler and the various tools (linker, debugger, and so on). Your compiler documentation is an important and useful source of information for writing, compiling, and debugging C programs.

Default Settings

This appendix summarizes the default settings for the hardware and software in your kit. If you need more information about a particular setting, or if you want to try a different configuration, please refer to the appropriate VXIpc user manual for your hardware reference and to Chapter 3, *NI-VXI Configuration Utility*, for your software reference.

Because you can also use `vxitedit` to configure a VXI-MXI-2 or a VME-MXI-2, this appendix also summarizes the software default settings for the VXI/VME-MXI-2.

VXIpc Controller

This section summarizes the hardware and software default settings for the VXIpc controller.

Table A-1. VXIpc 800 Series Hardware Default Settings

Hardware Component	Default Setting
S1—Ethernet EEPROM	Enabled. <i>Do not alter this setting.</i>
S2—Power On Self Configuration (POSC)	Enabled. <i>Do not alter this setting.</i>
S3—CLK10 Source	Source from onboard oscillator
S4—CLK10 SMB Polarity	Not inverted
S5—CLK10 SMB Direction	Receive CLK10
S6—CLK10 SMB Termination	Do not terminate
S7—TrigIn SMB Termination	Do not terminate
S8—GPIB Circuitry Interrupt	Level 11
S9—MITE Configuration EEPROM	Load values from user section

Table A-1. VXIpc 800 Series Hardware Default Settings (Continued)

Hardware Component	Default Setting
W1—SCSI Termination	Enabled
W2—CMOS Clear	CMOS not cleared
W4—Parallel Port DMA Channel	Channel 1
W13—Slot Detection	Automatically detect slot

Table A-2. VXIpc 700 Series Hardware Default Settings

Hardware Component	Default Setting
W1—Slot detection	Automatically detect slot
W3—CMOS Clear	CMOS not cleared
W6—Ethernet EEPROM	Enabled. <i>Do not alter this setting.</i>
W7—MITE Configuration EEPROM	Load values from user section
W10—Power On Self Configuration (POSC)	Enabled. <i>Do not alter this setting.</i>
W12—TrigIn SMB Termination	Do not terminate

Table A-3. Logical Address Configuration Editor Default Settings

Editor Field	Default Setting
Logical Address	0
Device Type	MBD
Address Space	A16
VXI Shared RAM Size	0 KB
Shared RAM Pool	0 KB
Lower Half Window Byte Swapping	Disabled (non-swapped)
Upper Half Window Byte Swapping	Disabled (non-swapped)

Table A-3. Logical Address Configuration Editor Default Settings (Continued)

Editor Field	Default Setting
Map Upper and Lower Halves to Same Address	Disabled
Resource Manager Delay	5 s

Table A-4. Device Configuration Editor Default Settings

Editor Field	Default Setting
System IRQ Level	Disabled
Servant Area Size	0
Number of Handlers	1
Number of Interrupters	0
Protocol Register	0xFF0
Read Protocol Response	0x8448

Table A-5. Bus Configuration Editor Default Settings

Editor Field	Default Setting
Bus Timeout	500
Automatic Retry Protocol	Enabled
Automatic VXI Slave Cycle Retry	Enabled on the VXIpc 800 Series Disabled on the VXIpc 700 Series
A24/A32 Slave Write Posting	Disabled
VXI Transfer Limit	256
Arbiter Type	Priority
Request Level	3
Fair Requester	Disabled
Arbiter Timeout	Disabled
User Window Base	Auto
User Window Size	64 KB

Table A-5. Bus Configuration Editor Default Settings (Continued)

Editor Field	Default Setting
User Window Below 1 MB	No
Driver Window Base	Auto
Driver Window Size	32 KB
Driver Window Below 1 MB	No

VXI/VME-MXI-2

This section summarizes the software default settings for the VXI-MXI-2 and VME-MXI-2.

Table A-6. VXI/VME-MXI-2 Configuration Editor Default Settings

Editor Field	Default Setting
Logical Address	1 (set by hardware switch)
LA Selection	Set by hardware switch
Address Space	A24 *
Requested Memory	16 KB *
A16 Write Posting	Disabled
A24/A32 Write Posting	Disabled
Interlocked Mode	Disabled
VXI/VME System Controller	Auto
VXI/VME Bus Timeout Value	125 μ s
VXI/VME Auto Retry	Disabled
VXI/VME Transfer Limit	256
VXI/VME Arbiter Type	Priority
VXI/VME Request Level	3
VXI/VME Fair Requester	Enabled
VXI/VME Arbiter Timeout	Enabled
MXI System Controller	Auto

Table A-6. VXI/VME-MXI-2 Configuration Editor Default Settings (Continued)

Editor Field	Default Setting
MXI Bus Timeout Value	1 ms
MXI Auto Retry	Disabled
MXI Transfer Limit	Unlimited
MXI Parity Checking	Enabled
MXI Fair Requester	Disabled
MXI CLK10 Signal Direction	Set by hardware switch (VXI-MXI-2 only)
* Assumes no DRAM is installed. If DRAM is installed, the Address Space should be A32, and Requested Memory should match the amount of DRAM.	

Common Questions

This appendix addresses common questions you may have about using the NI-VXI software on the VXIpc platform for VxWorks.

How should I set up my system?

1. Install hardware components and boot the system.
2. Build the VxWorks operating system using the VxWorks Development System and the Board Support Package.
3. Load the NI-VXI software and utilities.
4. Configure your hardware with vxitedit. Use the Logical Address, Bus, and Device Configuration Editors to change aspects of the hardware and software.
5. Reboot to initialize your National Instruments hardware.
6. Run resman to initialize the VXIbus.
7. Optionally run vxitedit to configure any extender devices on the VXIbus.
8. Run victext to verify device operation.

How do I load the NI-VXI software driver and utilities?

There are two options for loading and linking the NI-VXI software. One option is to load the NI-VXI software into the VxWorks operating system before your application requires it. You can include the following lines in your startup script to load the NI-VXI modules at boot time.

```
ld < path/nivxi.o
ld < path/resman.o
ld < path/vxitedit.o
ld < path/victext.o
```

where path is the location where you have installed the utilities.

If you have a good understanding of VxWorks, another option is to modify the VXIpc BSP's Makefile to link the NI-VXI libraries into the VxWorks system image. You can do this by changing MACH_EXTRA to include the object files for NI-VXI. This action ensures that the NI-VXI software is available as soon as the operating system finishes booting.

What is the function of the NI-VXI utilities?

The utilities have the following responsibilities:

- **resman**—This utility initializes and configures all the other devices in your VXI system.
- **vxitedit**—This utility configures your National Instruments hardware.
- **victext**—Use this utility to interactively communicate with VXI devices over the VXIbus using the NI-VXI API.

What does resman do?

The **resman** utility performs the duties of a VXI Resource Manager as discussed in the VXIbus specification. When you set a National Instruments controller to Logical Address 0, you will at some point need to run **resman** to configure your VXI instruments. If your controller uses a different (non-zero) logical address and is a message-based device, you need to start **resman** before running it on the Logical Address 0 computer.

So when do you need to run resman?

The answer is, whenever you need to configure your VXI instruments. For example, if you power-cycle your VXI chassis, your instruments will be reset, and you will need to run **resman** to configure them. You can get into trouble if you run **resman** when your devices are not in a reset state. Therefore, if you have to run **resman** after running it once, you should reset all of your VXI instruments.

How do I handle VME devices?

Although there is no way to automatically detect VME devices in a system, you can add them easily through the **Non-VXI Device Editor** in **vxitedit**. After you assign a pseudo-logical address and other resource values, **resman** can configure the VME devices into your VXI system.

How can I determine the revision of the VXIpc controller that my NI-VXI software supports?

Run the NI-VXI utility program **victext**. Type **ver** at the prompt, and the utility displays the versions of **victext** and NI-VXI, and the latest VXIpc hardware revision that this NI-VXI driver supports.

How can I determine the serial number and hardware revision of the VXIpc controller?

Run `victext` and select the **VXIpc Configuration Editor**. The opening screen displays the serial number and hardware revision of the VXIpc.

Which NI-VXI utility program must I use to configure the VXIpc controller?

Use the `vxitedit` utility to configure the VXIpc. You do not need to run `vxitedit` if you are satisfied with the default settings. Refer to Chapter 3, *NI-VXI Configuration Utility*, for complete details on using the configuration editors.

Which NI-VXI utility program must I use to perform startup Resource Manager operations?

Use the `resman` utility to perform startup Resource Manager operations. This utility uses the settings configured in `vxitedit`. It initializes your VXI/VMEbus system and stores the information that it collects to the `resman.tbl` file in the `tbl` subdirectory of the `ni-vxi` directory. You can access this information using the NI-VXI system configuration functions described in detail in Chapter 2, *Function Reference*, of the *NI-VXI Programmer Reference Manual*.

What can I do to make sure that my system is up and running?

The fastest method for testing the system is to run `resman`. This program attempts to access memory in the upper A16 address space of each device in the system. If `resman` does not report any problems, the VXI communication system is operational.

To test individual devices, you can use the `victext` program to interactively issue NI-VXI functions. You can use the `vxiiin()` and `vxiiout()` functions or the `vxiiinReg()` and `vxiioutReg()` functions to test register-based devices by programming their registers. If you have any message-based devices, you can send and receive messages with the `wswrt()` and `wswrd()` functions. Notice that `vxiiinReg()` and `vxiioutReg()` are for VXI devices only.

What should I do if I get a Configuration EEPROM is Invalid message?

There are several reasons why you could receive this message. If you turn off the computer while the configuration update process is still in progress, the VXIpc functions normally except when using `vxitedit`. To correct this

problem, switch to the factory configuration as described in the configuration and installation chapter of your VXIpc user manual. This requires that you change switch S9 on the VXIpc 800 Series or jumper W7 on the VXIpc 700 Series. Reboot the computer and update the configuration, or load the configuration from file.

Two other reasons you might receive this error message are that the board might have an incorrect base address assigned for the driver window, or the memory for the MITE's configuration EEPROM may not be mapped correctly. If a mapping error is the cause, follow the instructions in the [Using the VXIpc Board Support Package to Create the VxWorks Operating System](#) section in Chapter 1, *Introduction*, to set up the mapping in `sysLib.c`.

How do I fix an incorrect driver window base?

Run `vxitedit` and check the driver and user window base and size values. The driver window size must be 32 KB (0x8000 bytes). The user window should be the size you have set up in `vxitedit` or you can keep the default value of 64 KB (0x100000 bytes). You can use the `findMiteWindows` function to determine the base addresses for the windows. Typically, the base addresses will be near the top of memory. By default, they are located at 0xFFAC0000 and 0xFFAD0000.

To correct the problem, switch to the factory configuration as described in the previous topic. If the problem disappears, use `vxitedit` to correct the driver and user window placement. If the problem persists, it may indicate that the memory mapping for the MITE is not correct, and should be fixed in `sysLib.c`. Refer to the [Using the VXIpc Board Support Package to Create the VxWorks Operating System](#) section in Chapter 1, *Introduction*, for information on changing the mapping.

What do the LEDs on the front of the VXIpc controller mean?

Refer to Appendix C, *LED Indicators*, in your VXIpc user manual for a description of the front panel LEDs.

Is something wrong if the red SYSFAIL and FAILED LEDs stay lit after booting the VXIpc controller?

If either the **SYSFAIL** or **FAILED** LED remains lit, refer to Appendix C, *LED Indicators*, in your VXIpc user manual for troubleshooting steps.

Can I access 32-bit registers in my VXIbus system from the VXIpc?

Yes. The VXIpc uses the 32-bit PCI bus to interface to the VXIbus. In fact, its VXIbus circuitry also supports the new VME64 standard for D64 accesses.

What kind of signal is CLK10 and what kind of signal do I need for an external CLK10?

CLK10 is a differential ECL signal on the backplane. However, the oscillator for the VXIpc 800/700 and the EXTCLK input on the VXIpc 800 Series front panel use TTL levels; therefore, you need to supply a TTL-level signal for EXTCLK. Our voltage converters convert the signal to differential ECL. You cannot drive CLK10 externally on the VXIpc 700 Series.

What is the accuracy of the CLK10 signal?

The CLK10 signal generated by all of the VXIpc controllers is ± 100 ppm (0.01%) as per the VXIbus specification. If you need a more accurate CLK10 signal on the VXIpc 800 Series, you can use the EXTCLK connector on its front panel.

What kind of monitor can I use with the VXIpc controller?

VXIpc computers that use Super VGA video output work only with monitors having a horizontal scan rate of at least 50 kHz and a vertical scan rate of 60 Hz.



Caution *Make sure your monitor meets this specification. Enabling the Super VGA option on a monitor that does not meet this specification will damage your monitor.*

What should I do if my keyboard connector does not fit into the keyboard port on the VXIpc controller?

You can plug keyboards that have a 6-pin Mini DIN PS/2 type connector directly into the VXIpc. You can use the keyboard adapter cable that is included with every VXIpc 800 Series kit to adapt the larger AT keyboard connector to the 6-pin Mini DIN connector.

How do I connect an external speaker to get audio capability?

- ◆ **VXIpc 800 Series users only**—A twisted-pair cable connects the front panel audio connector to the VXIpc 800 Series motherboard. Connect the external speaker to this front-panel connector. The center pin of the

connector provides the audio signal. The shield of the connector is GROUND.

How do I add RAM to the VXIpc? What is the maximum amount of RAM that I can have?

For information about adding RAM to the VXIpc controller, refer to Appendix A, *Specifications*, in your VXIpc user manual.

Which interrupt levels are free to be used by ISA bus boards? Which area of upper memory (adapter space) is free for use by ISA bus boards or expanded memory manager software programs?

Refer to the appendix on VXIpc system resources in your VXIpc user manual for information on the available port I/O register space, upper memory area, interrupts, and DMA channels.

How do I install the VXIpc controller in a slot other than Slot 0?

The VXIpc controller automatically detects whether it is in Slot 0 of a VXIbus mainframe. You do not need to change jumper settings to install the VXIpc in a slot other than Slot 0 unless you have defeated the first slot detector (FSD) circuitry by changing the appropriate jumper setting on the VXIpc.

Refer to the configuration and installation chapter of your VXIpc user manual for information on enabling and defeating the FSD circuitry.

How do I check the configuration of the memory, floppy drive, hard drive, time/date, and so on?

You can view these parameters in the BIOS setup. To enter the BIOS setup, reboot the VXIpc and press the key during the memory tests. Refer to Chapter 4, *BIOS*, in your VXIpc user manual for more information.



Customer Communication

For your convenience, this appendix contains forms to help you gather the information necessary to help us solve your technical problems and a form you can use to comment on the product documentation. When you contact us, we need the information on the Technical Support Form and the configuration form, if your manual contains one, about your system configuration to answer your questions as quickly as possible.

National Instruments has technical assistance through electronic, fax, and telephone systems to quickly provide the information you need. Our electronic services include a bulletin board service, an FTP site, a fax-on-demand system, and e-mail support. If you have a hardware or software problem, first try the electronic support systems. If the information available on these systems does not answer your questions, we offer fax and telephone support through our technical support centers, which are staffed by applications engineers.

Electronic Services

Bulletin Board Support

National Instruments has BBS and FTP sites dedicated for 24-hour support with a collection of files and documents to answer most common customer questions. From these sites, you can also download the latest instrument drivers, updates, and example programs. For recorded instructions on how to use the bulletin board and FTP services and for BBS automated information, call 512 795 6990. You can access these services at:

United States: 512 794 5422

Up to 14,400 baud, 8 data bits, 1 stop bit, no parity

United Kingdom: 01635 551422

Up to 9,600 baud, 8 data bits, 1 stop bit, no parity

France: 01 48 65 15 59

Up to 9,600 baud, 8 data bits, 1 stop bit, no parity

FTP Support

To access our FTP site, log on to our Internet host, `ftp.natinst.com`, as anonymous and use your Internet address, such as `joesmith@anywhere.com`, as your password. The support files and documents are located in the `/support` directories.

Fax-on-Demand Support

Fax-on-Demand is a 24-hour information retrieval system containing a library of documents on a wide range of technical information. You can access Fax-on-Demand from a touch-tone telephone at 512 418 1111.

E-Mail Support (Currently USA Only)

You can submit technical support questions to the applications engineering team through e-mail at the Internet address listed below. Remember to include your name, address, and phone number so we can contact you with solutions and suggestions.

support@natinst.com

Telephone and Fax Support

National Instruments has branch offices all over the world. Use the list below to find the technical support number for your country. If there is no National Instruments office in your country, contact the source from which you purchased your software to obtain support.

Country	Telephone	Fax
Australia	03 9879 5166	03 9879 6277
Austria	0662 45 79 90 0	0662 45 79 90 19
Belgium	02 757 00 20	02 757 03 11
Brazil	011 288 3336	011 288 8528
Canada (Ontario)	905 785 0085	905 785 0086
Canada (Quebec)	514 694 8521	514 694 4399
Denmark	45 76 26 00	45 76 26 02
Finland	09 725 725 11	09 725 725 55
France	01 48 14 24 24	01 48 14 24 14
Germany	089 741 31 30	089 714 60 35
Hong Kong	2645 3186	2686 8505
Israel	03 6120092	03 6120095
Italy	02 413091	02 41309215
Japan	03 5472 2970	03 5472 2977
Korea	02 596 7456	02 596 7455
Mexico	5 520 2635	5 520 3282
Netherlands	0348 433466	0348 430673
Norway	32 84 84 00	32 84 86 00
Singapore	2265886	2265887
Spain	91 640 0085	91 640 0533
Sweden	08 730 49 70	08 730 43 70
Switzerland	056 200 51 51	056 200 51 55
Taiwan	02 377 1200	02 737 4644
United Kingdom	01635 523545	01635 523154
United States	512 795 8248	512 794 5678

Technical Support Form

Photocopy this form and update it each time you make changes to your software or hardware, and use the completed copy of this form as a reference for your current configuration. Completing this form accurately before contacting National Instruments for technical support helps our applications engineers answer your questions more efficiently.

If you are using any National Instruments hardware or software products related to this problem, include the configuration forms from their user manuals. Include additional pages if necessary.

Name _____

Company _____

Address _____

Fax (____) _____ Phone (____) _____

Computer brand _____ Model _____ Processor _____

Operating system (include version number) _____

Clock speed _____ MHz RAM _____ MB Display adapter _____

Mouse ____yes ____no Other adapters installed _____

Hard disk capacity _____ MB Brand _____

Instruments used _____

National Instruments hardware product model _____ Revision _____

Configuration _____

National Instruments software product _____ Version _____

Configuration _____

The problem is: _____

List any error messages: _____

The following steps reproduce the problem: _____

Hardware and Software Configuration Form

Record the settings and revisions of your hardware and software on the line to the right of each item. Complete a new copy of this form each time you revise your software or hardware configuration, and use this form as a reference for your current configuration. Completing this form accurately before contacting National Instruments for technical support helps our applications engineers answer your questions more efficiently.

National Instruments Products

NI-VXI Software Version Number _____

VXIpc Series _____

VXIpc 800 Series Hardware Settings

VXIpc 800 Series Model Number _____

Part Number _____

Serial Number _____

Hard Drive Size _____ Video Memory _____

Processor Speed _____

DRAM SIMMs Installed _____

Slot Location _____

W1 Setting: SCSI Termination _____

W2 Setting: CMOS Clear _____

W4 Setting: Parallel Port DMA Channel _____

W13 Setting: Slot 0 Detection _____

S1 Setting: Ethernet EEPROM _____

S2 Setting: MITE Self-Configuration _____

S3 Setting: CLK10 Source _____

S4 Setting: CLK10 SMB Polarity _____

S5 Setting: CLK10 SMB Direction _____

S6 Setting: CLK10 SMB Termination _____

S7 Setting: External Trigger SMB Termination _____

S8 Setting: GPIB Circuitry Interrupt _____

S9 Setting: MITE Configuration EEPROM _____

VXIpc 700 Series Hardware Settings

VXIpc 700 Series Model Number _____

Part Number _____

Serial Number _____

Hard Drive Size _____ Video Memory _____

Processor Speed _____

DRAM SIMMs Installed _____

Slot Location _____

W1 Setting: Slot 0 Detection _____

W3 Setting: CMOS Clear _____

W6 Setting: Ethernet EEPROM _____

W7 Setting: MITE Configuration EEPROM _____

W10 Setting: MITE Self-Configuration _____

W12 Setting: External Trigger SMB Termination _____

VXIpc Configuration Editor Settings

Logical Address _____

Device Type _____

Address Space _____

VXI Shared RAM Size _____

Shared RAM Pool _____

Lower Half Window Byte Swapping _____

Upper Half Window Byte Swapping _____

Mapping Scheme for Lower and Upper Half Windows of VXI Shared RAM _____

Resource Manager Delay _____

System IRQ Level _____

Number of Handlers _____

Number of Interrupters _____

Servant Area Size _____

Protocol Register _____

Read Protocol Response _____

Bus Timeout _____

Automatic Retry Protocol _____

Automatic VXI Slave Cycle Retry _____
A24/A32 Slave Write Posting _____
VXI Transfer Limit _____
Arbiter Type _____
Request Level _____
Fair Requester _____
Arbiter Timeout _____
User Window Base _____
User Window Size _____
User Window Below 1 MB _____
Driver Window Base _____
Driver Window Size _____
Driver Window Below 1 MB _____

VXI/VME-MXI-2 Configuration Editor Settings

Logical Address _____
LA Selection _____
Address Space _____
Requested Memory _____
A16 Write Posting _____
A24/A32 Write Posting _____
Interlocked or Normal Mode _____
VXI/VME System Controller _____
VXI/VME Bus Timeout Value _____
Auto Retry for Cycles from VXI/VMEbus to MXIbus _____
Transfer Limit on VXI/VMEbus _____
VXI/VME Arbiter Type _____
VXI/VME Request Level _____
VXI/VME Fair Requester _____
VXI/VME Arbiter Timeout _____
MXI System Controller _____
MXI Bus Timeout Value _____
Auto Retry for Cycles from MXIbus to VXI/VMEbus _____
Transfer Limit on MXIbus _____
MXI Parity Checking _____

MXI Fair Requester _____

MXI-2 CLK10 Direction (VXI-MXI-2 only) _____

Other Products

VxWorks version _____

Computer make and model _____

Microprocessor _____

Clock frequency or speed _____

Type of video board installed _____

Programming language _____

Programming language version _____

Monitor (manufacturer, model) _____

Mouse (manufacturer, model) _____

Keyboard (manufacturer, model) _____

Other boards in system _____

Other peripherals (manufacturer, model) _____

Documentation Comment Form

National Instruments encourages you to comment on the documentation supplied with our products. This information helps us provide quality products to meet your needs.

Title: *Getting Started with Your VXIpc™ Embedded Controller for VxWorks*

Edition Date: *December 1997*

Part Number: *321846A-01*

Please comment on the completeness, clarity, and organization of the manual.

If you find errors in the manual, please record the page numbers and describe the errors.

Thank you for your help.

Name _____

Title _____

Company _____

Address _____

E-Mail Address _____

Phone (____) _____ Fax (____) _____

Mail to: Technical Publications
National Instruments Corporation
6504 Bridge Point Parkway
Austin, Texas 78730-5039

Fax to: Technical Publications
National Instruments Corporation
512 794 5678

Glossary

Prefix	Meanings	Value
n-	nano-	10^{-9}
μ -	micro-	10^{-6}
m-	milli-	10^{-3}
k-	kilo-	10^3
M-	mega-	10^6
G-	giga-	10^9

A

A16 space	VXIbus address space equivalent to the VME 64 KB short address space. In VXI, the upper 16 KB of A16 space is allocated for use by VXI device configuration registers. This 16 KB region is referred to as VXI configuration space.
A24 space	VXIbus address space equivalent to the VME 16 MB <i>standard</i> address space
A32 space	VXIbus address space equivalent to the VME 4 GB <i>extended</i> address space
address	Character code that identifies a specific location (or series of locations) in memory
address space	A set of 2^n memory locations differentiated from other such sets in VXI/VMEbus systems by six addressing lines known as address modifiers. n is the number of address lines required to uniquely specify a byte location in a given space. Valid numbers for n are 16, 24, and 32. In VME/VXI, because there are six address modifiers, there are 64 possible address spaces.
address window	A portion of address space that can be accessed from the application program

ANSI American National Standards Institute
ASIC Application-Specific Integrated Circuit

B

B bytes

backplane An assembly, typically a printed circuit board, with 96-pin connectors and signal paths that bus the connector pins. A C-size VXIbus system has two sets of bused connectors called J1 and J2. A D-size VXIbus system has three sets of bused connectors called J1, J2, and J3.

BERR* Bus error signal

BIOS Basic Input/Output System. BIOS functions are the fundamental level of any PC or compatible computer. BIOS functions embody the basic operations needed for successful use of the computer's hardware resources.

BTO *See* Bus Timeout Unit.

Bus Timeout Unit A functional module that times the duration of each data transfer and terminates the cycle if the duration is excessive. Without the termination capability of this module, a bus master attempt to access a nonexistent slave could result in an indefinitely long wait for a slave response.

byte order How bytes are arranged within a word or how words are arranged within a longword. Motorola ordering stores the most significant byte (MSB) or word first, followed by the least significant byte (LSB) or word. Intel ordering stores the LSB or word first, followed by the MSB or word.

C

CLK10 A 10 MHz, ± 100 ppm, individually buffered (to each module slot), differential ECL system clock that is sourced from Slot 0 of a VXIbus mainframe and distributed to Slots 1 through 12 on P2. It is distributed to each slot as a single-source, single-destination signal with a matched delay of under 8 ns.

CMOS Complementary Metal Oxide Semiconductor; a process used in making chips

Commander	A message-based device that is also a bus master and can control one or more Servants
configuration registers	A set of registers through which the system can identify a module device type, model, manufacturer, address space, and memory requirements. In order to support automatic system and memory configuration, the VXIbus specification requires that all VXIbus devices have a set of such registers.

D

Data Transfer Bus	DTB; one of four buses on the VMEbus backplane. The DTB is used by a bus master to transfer binary data between itself and a slave device.
DMA	Direct Memory Access; a method by which data is transferred between devices and internal memory without intervention of the central processing unit
DRAM	Dynamic RAM (Random Access Memory); storage that the computer must refresh at frequent intervals
driver window	A region of address space that is decoded by the VXIpc 800/700 for use by the NI-VXI software
DTB	<i>See</i> Data Transfer Bus.

E

ECL	Emitter-Coupled Logic
EEPROM	Electrically Erasable Programmable Read Only Memory
embedded controller	An intelligent CPU (controller) interface plugged directly into the VXI backplane, giving it direct access to the VXIbus. It must have all of its required VXI interface capabilities built in.

F

fair requester	A VXIbus device that will not arbitrate for the VXIbus after releasing it until it detects the bus request signal inactive. This ensures that all requesting devices will be granted use of the bus.
----------------	--

frame number The frame number is the logical address of the lowest-numbered device in the frame. This is usually the controller (logical address 0) or the parent-side extender in the frame.

G

GPIB General Purpose Interface Bus (IEEE 488)

H

hex hexadecimal; the numbering system with base 16, using the digits 0 to 9 and letters A to F

Hz hertz; cycles per second

I

IEEE Institute of Electrical and Electronics Engineers

I/O input/output; the techniques, media, and devices used to achieve communication between machines and users

interrupt A means for a device to request service from another device

interrupt handler A VMEbus functional module that detects interrupt requests generated by interrupters and responds to those requests by requesting status and identify information

interrupt level The relative priority at which a device can interrupt

IRQ* Interrupt signal

K

KB kilobytes of memory

L

LED	Light-Emitting Diode
logical address	An 8-bit number that uniquely identifies each VXIbus device in a system. It defines the A16 register address of a device, and indicates Commander and Servant relationships.

M

master	A functional part of a VME/VXIbus device that initiates data transfers on the backplane. A transfer can be either a read or a write.
MB	megabytes of memory
MBD	Message-Based Device
message-based device	An intelligent device that implements the defined VXIbus registers and communication protocols. These devices are able to use Word Serial Protocol to communicate with one another through communication registers.
MITE	A National Instruments custom ASIC, a sophisticated dual-channel DMA controller that incorporates the Synchronous MXI and VME64 protocols to achieve high-performance block transfer rates

N

NI-VXI	The National Instruments bus interface software for VME/VXIbus systems
Non-Slot 0 device	A device configured for installation in any slot in a VXIbus mainframe other than Slot 0. Installing such a device into Slot 0 can damage the device, the VXIbus backplane, or both.

P

PCI	Peripheral Component Interconnect. The PCI bus is a high-performance 32-bit or 64-bit bus with multiplexed address and data lines.
POSC	Power On Self Configuration

R

RBD	Register-Based Device
register-based device	A Servant-only device that supports VXIbus configuration registers. Register-based devices are typically controlled by message-based devices via device-dependent register reads and writes.
resman	The name of the National Instruments Resource Manager in the NI-VXI bus interface software. <i>See</i> Resource Manager.
Resource Manager	A message-based Commander located at Logical Address 0 that provides configuration management services such as address map configuration, Commander and Servant mappings, and self-test and diagnostic management
retry	An acknowledge by a destination that signifies that the cycle did not complete and should be repeated

S

s	seconds
Servant	A device controlled by a Commander; there are message-based and register-based Servants
Shared Memory Protocol	A communication protocol that uses a block of memory that is accessible to both a client and a server. The memory block operates as a message buffer for communications.
SIMM	Single In-line Memory Module
slave	A functional part of a VME/VXIbus device that detects data transfer cycles initiated by a VMEbus master and responds to the transfers when the address specifies one of the device's registers
Slot 0 device	A device configured for installation in Slot 0 of a VXIbus mainframe. This device is unique in the VXIbus system in that it performs the VMEbus System Controller functions, including clock sourcing and arbitration for data transfers across the backplane. Installing such a device into any other slot can damage the device, the VXIbus backplane, or both.
SMB	Sub Miniature Type B connector with a snap coupling for fast connection

T

trigger Either TTL or ECL lines used for intermodule communication

TTL Transistor-Transistor Logic

U

user window A region of address space reserved by the VXIpc 800/700 Series for use via the NI-VXI low-level function calls. `MapVXIAddress()` uses this address space to allocate regions for use by the `VXIpeek()` and `VXIpoke()` macros.

V

victext VXI Interactive Control Program, a part of the NI-VXI bus interface software package. Used to program VXI devices, and develop and debug VXI application programs.

VME Versa Module Eurocard or IEEE 1014

VMEbus System Controller A device configured for installation in Slot 0 of a VXIbus mainframe or Slot 1 of a VMEbus chassis. This device is unique in the VMEbus system in that it performs the VMEbus System Controller functions, including clock sourcing and arbitration for data transfers across the backplane. Installing such a device into any other slot can damage the device, the VMEbus/VXIbus backplane, or both.

VXIbus VMEbus Extensions for Instrumentation

vxitedit VXI Resource Editor program, a part of the NI-VXI bus interface software package. Used to configure the system, edit the manufacturer name and ID numbers, edit the model names of VXI and non-VXI devices in the system, as well as the system interrupt configuration information, and display the system configuration information generated by the Resource Manager.

vxiiinit A program in the NI-VXI bus interface software package that initializes the board interrupts, shared RAM, VXI register configurations, and bus configurations

W

- Word Serial Protocol** The simplest required communication protocol supported by message-based devices in a VXIbus system. It utilizes the A16 communication registers to transfer data using a simple polling handshake method.
- write posting** A mechanism that signifies that a device will immediately give a successful acknowledge to a write transfer and place the transfer in a local buffer. The device can then independently complete the write cycle to the destination.

Index

Numbers

32-bit registers, accessing, B-5

A

A16 write posting, VXI/VME-MXI-2,
3-12 to 3-13

A24/A32 write posting

VXIpc, 3-8

VXI/VME-MXI-2, 3-12 to 3-13

address space configuration

VXIpc, 3-3 to 3-4

VXI/VME-MXI-2, 3-12

addressing mapping, Upper/Lower Half Window
field, 3-5

application development, 4-1 to 4-5

compiling C programs, 4-4 to 4-5

symbols, 4-4 to 4-5

interacting with devices, 4-2

programming with NI-VXI, 4-3 to 4-4

example programs (table), 4-4

reconfiguring hardware, 4-1

resetting of devices by power cycling (note),
4-1

VME support, 4-2 to 4-3

for VxWorks, 1-4

arbiter timeout, setting

VXIpc, 3-9 to 3-10

VXI/VME-MXI-2, 3-16

arbiter type, setting

VXIpc, 3-9

VXI/VME-MXI-2, 3-16

arbitration mode, interlocked, 3-13 to 3-14

automatic retry feature

MXIbus, 3-17

VXI slave cycle, 3-7 to 3-8

VXIbus, 3-7

VXI/VME-MXI-2, 3-15

B

BINARY_COMPATIBLE flag, 4-5

BTO. *See* Bus Timeout (BTO) value.

bulletin board support, C-1

Bus Configuration Editor. *See* VXIpc Bus
Configuration Editor.

Bus Timeout (BTO) value

MXIbus, 3-17 to 3-18

VXIbus, 3-7

VXI/VME, 3-15

byte swapping, Upper/Lower Half Window
field, 3-4

C

C programs

compiling, 4-4 to 4-5

symbols, 4-4 to 4-5

CLK10 signal, MXIbus

questions about, B-5

setting, 3-18

common questions about NI-VXI software,
B-1 to B-6

compiling C programs, 4-4 to 4-5

symbols, 4-4 to 4-5

configuration, basic. *See also* default settings.

checking BIOS setup parameters, B-6

common questions, B-1 to B-3

hardware installation, 2-1 to 2-2

setting up VXIpc controller with VxWorks,
2-2 to 2-3

testing your system, B-3

using default settings, 2-1

VME devices, 4-2 to 4-3

Configuration Editors. *See* VXIpc
Configuration Editor; VXI/VME-MXI-2
Configuration Editor.
configuration EEPROM error message,
B-3 to B-4
configuration settings, VXIpc
loading from file, 3-2
reverting to current settings, 3-2
updating current configuration, 3-2
controllers. *See* System Controller; VXIpc
embedded controller.
customer communication, *xii*, C-1 to C-2

D

default settings, A1 to A5
Ethernet driver default settings for
VxWorks (table), 1-6
VXIpc controller
Bus Configuration Editor (table),
A-3 to A-5
Device Configuration Editor
(table), A3
Logical Address Configuration
Editor (table), A-2 to A-3
VXIpc 700 Series hardware settings
(table), A-2
VXIpc 800 Series hardware settings
(table), A-1 to A-2
VXI/VME-MXI-2 Configuration Editor
settings (table), A-4 to A-5
developing applications. *See* application
development.
Device Configuration Editor. *See* VXIpc
Device Configuration Editor.
device interaction using *victext* utility, 4-2
device type, setting, 3-3
directories pre-installed on hard drive, 1-3
documentation
conventions used in manual, *x*
how to use documentation set, *xi-xii*
how to use this manual (flowchart), 1-1

organization of manual, *ix*
related documentation, *xii*
DRAM, installing (note), 3-12
driver window. *See* user and driver window
configuration.

E

electronic support services, C-1 to C-2
e-mail support, C-2
Ethernet driver default settings for VxWorks
(table), 1-6

F

FAILED LED, B-4
fair request, enabling
MXI, 3-19
VXI, 3-9
VXI/VME-MXI-2, 3-17
fax and telephone support numbers, C-2
Fax-on-Demand support, C-2
files for NI-VXI, pre-installed on hard
drive, 1-3
FTP support, C-1

H

handlers for interrupts, selecting number
of, 3-6
hardware
basic configuration. *See also* default
settings.
checking BIOS setup
parameters, B-6
common questions, B-1
hardware installation, 2-1 to 2-2
setting up VXIpc controller with
VxWorks, 2-2 to 2-3
using default settings, 2-1
VME devices, 4-2 to 4-3

description, 1-2
 installation, 2-1 to 2-2

I

installation
 hardware installation, 2-1 to 2-2
 reinstalling NI-VXI software, 1-7
 interlocked arbitration mode, 3-13 to 3-14
 interrupt handlers, selecting number of, 3-6
 interrupters, selecting number of, 3-6
 interrupts for ISA bus boards, B-6
 IRQ level, selecting, 3-5

K

keyboard connector problems, B-5

L

LEDs on front panel, B-4
 logical address configuration
 VXIpc, 3-3
 VXI/VME-MXI-2, 3-11 to 3-12
 Logical Address Configuration Editor. *See*
 VXIpc Logical Address Configuration
 Editor.
 Lower Half Window field. *See* Upper/Lower
 Half Window field.

M

manual. *See* documentation.
 memory. *See also* VXI Shared RAM options.
 adding RAM, B-6
 Address Space and Requested Memory
 fields, 3-12
 fixing incorrect driver window base, B-4
 installing DRAM (note), 3-12
 ISA bus boards or expanded memory
 manager software, B-6

mapping of MITE windows, 1-61-1-7
 user and driver window configuration,
 3-10 to 3-11

MITE windows, mapping, 1-61-1-7
 MXI Auto Retry, 3-17
 MXI Bus System Controller, setting, 3-17
 MXI Bus Timeout value, setting, 3-17 to 3-18
 MXI CLK10 signal, 3-18, B-5
 MXI fair requester, 3-19

N

NI-488 DDK software kit, 1-3
 NI-VXI software. *See also* application
 development.
 common questions, B-1 to B-6
 components, 1-2
 determining revision of VXIpc controller
 supported, B-2 to B-3
 files pre-installed on hard drive, 1-3
 functions of utilities, B-2
 loading driver and utilities, B-1
 notes for VxWorks, 1-3
 overview, 1-2 to 1-3
 programming VXI instruments, 4-3 to 4-4
 examples (table), 4-4
 reinstalling, 1-7
 Non-VXI Device Configuration Editor, 4-3

O

onboard DRAM, installing (note), 3-12

P

parity checking, MXIbus, 3-18
 problems and solutions, B-1 to B-6
 programming. *See* application development.
 Protocol Register contents, specifying, 3-6

Q

questions about NI-VXI software, B-1 to B-6

R

RAM. *See also* VXI Shared RAM options.

adding, B-6

Read Protocol response, specifying, 3-7

request level, setting

VME Data Transfer Bus, 3-16

VXIpc, 3-9

Requested Memory field, 3-12

requirements for getting started, 1-1 to 1-2

Resource Manager Display, 4-1

Resource Manager (resman)

overview, B-2

performing startup Resource Manager operations, B-3

running after power cycling (note), 4-1

setting Resource Manager delay, 3-5

testing your system, B-3

when to run, B-2

retry feature. *See* automatic retry feature.

S

servant area size, setting, 3-6

setting up hardware. *See* hardware.

shared RAM. *See* VXI Shared RAM options.

Shared RAM Pool field, VXI Shared RAM, 3-4

slave cycle retry, automatic, 3-7 to 3-8

Slot 0 installation considerations

VMEbus System Controller (caution), 3-14

VXIpc controller, B-6

software. *See also* NI-VXI software.

NI-488 DDK software kit, 1-3

notes for VxWorks, 1-3

pre-installed software, 1-2

VxWorks host and target software, 1-4 to 1-5

speakers, connecting, B-5 to B-6

symbols, for compiling C programs, 4-4 to 4-5

SYSFAIL LED, B-4

System Controller

MXIbus System Controller, 3-17

Slot 0 considerations (caution), 3-14

VMEbus System Controller, 3-14

system IRQ level, selecting, 3-5

T

technical support, C-1 to C-2

telephone and fax support numbers, C-2

transfer limit, setting

MXIbus, 3-18

VXI, 3-8

VXI/VME bus, 3-15

U

Upper/Lower Half Window field

address mapping, 3-5

byte swapping, 3-4

user and driver window configuration, 3-10 to 3-11

Below 1 MB, 3-11

Window Base, 3-11

Window Size, 3-10

V

victext utility

interacting with devices, 4-2

overview, B-2

VME devices, configuring, 4-2 to 4-3, B-2

VMEbus System Controller, 3-14

VME-MXI-2 Configuration Editor. *See* VXI/VME-MXI-2 Configuration Editor.

VXI Bus Timeout value, setting, 3-7

- VXI fair requester, 3-9
- VXI Shared RAM options, 3-4 to 3-5
 - advanced settings, 3-4 to 3-5
 - Shared RAM Pool, 3-4
 - Upper/Lower Half Window Address Mapping, 3-5
 - Upper/Lower Half Window Byte Swapping, 3-4
 - VXI Shared RAM Size, 3-4
- VXI slave cycle retry, automatic, 3-7 to 3-8
- VXI transfer limit, setting, 3-8
- VXIbus automatic retry protocol, 3-7
- VXIpc 700 series hardware default settings (table), A-2
- VXIpc 800 series hardware default settings (table), A-1 to A-2
- VXIpc Bus Configuration Editor
 - A24/A32 Write Post, 3-8
 - Arbiter Timeout, 3-9
 - Arbiter Type, 3-9
 - Automatic VXI Slave Cycle Retry, 3-7 to 3-8
 - Automatic VXIbus Retry Protocol, 3-7
 - default settings (table), A-3 to A-4
 - Request Level, 3-9
 - User Window and Driver Window, 3-10 to 3-11
 - Below 1 MB, 3-11
 - Window Base, 3-11
 - Window Size, 3-10
 - VXI Bus Timeout, 3-7
 - VXI Fair Requester, 3-9 to 3-10
 - VXI Transfer Limit, 3-8
- VXIpc Configuration Editor
 - Load Configuration from File, 3-2
 - overview, 3-1 to 3-2
 - Record Configuration to File, 3-2
 - Revert to Current Configuration, 3-2
 - saving changes, 3-2
 - Update Current Configuration, 3-2
- VXIpc Device Configuration Editor
 - default settings (table), A-3
 - Number of Handlers, 3-6
 - Number of Interrupters, 3-6
 - Protocol Register, 3-6
 - Read Protocol Response, 3-7
 - Servant Area Size, 3-6
 - System IRQ Level, 3-5
- VXIpc embedded controller
 - common questions about, B-1 to B-6
 - default settings
 - Bus Configuration Editor (table), A-3 to A-5
 - Device Configuration Editor (table), A3
 - Logical Address Configuration Editor (table), A-2 to A-3
 - VXIpc 700 Series hardware settings (table), A-2
 - VXIpc 800 Series hardware settings (table), A-1 to A-2
 - hardware and software requirements, 1-1 to 1-2
 - hardware description, 1-2
 - setting up with VxWorks, 2-2 to 2-3. *See also* VxWorks.
 - software description, 1-2 to 1-3
- VXIpc Logical Address Configuration Editor
 - Address Space, 3-3 to 3-4
 - default settings (table), A-2 to A-3
 - Device Type, 3-3
 - Logical Address parameter, 3-3
 - Resource Manager Delay, 3-5
 - VXI Shared RAM options, 3-4 to 3-5
 - Lower Half Window and Upper Half Window, 3-5
 - Shared RAM Pool, 3-4
 - VXI Shared RAM Size, 3-4
- VXItdedit utility
 - fixing incorrect driver window base, B-4
 - Non-VXI Device Configuration Editor, 4-3

- overview, B-2
- running, 3-1
- VXI/VME automatic retry feature, 3-15
- VXI/VME-MXI-2 Configuration Editor
 - A16 Write Post and A24/A32 Write Post, 3-12 to 3-13
 - Address Space and Requested Memory, 3-12
 - Arbiter Timeout, 3-16
 - Arbiter Type, 3-16
 - default settings (table), A-4 to A-5
 - Interlocked Mode, 3-13 to 3-14
 - Logical Address, 3-11 to 3-12
 - MXI Auto Retry, 3-17
 - MXI Bus Timeout Value, 3-17 to 3-18
 - MXI CLK10 Signal, 3-18
 - MXI Fair Requester, 3-19
 - MXIbus System Controller, 3-17
 - MXIbus Transfer Limit, 3-18
 - overview, 3-11
 - Parity Checking, 3-18
 - Request Level, 3-16
 - VMEbus System Controller, 3-14
 - VXI/VME Auto Retry, 3-15
 - VXI/VME Bus Timeout Value, 3-15
 - VXI/VME Fair Requester, 3-17
 - VXI/VME Transfer Limit, 3-15
- VXIVXWORKS symbol, 4-4
- VxWorks
 - building with VXIpc board support package, 1-5 to 1-6
 - developing applications, 1-4
 - Ethernet driver default settings (table), 1-6
 - mapping of MITE windows, 1-61-1-7
 - ordering from Wind River Systems, 1-4
 - setting up on VXIpc controller, 2-2 to 2-3
 - software for VXIpc controller, 1-4 to 1-5
 - software notes, 1-3

W

- write posting
 - A16 write posting, VXI/VME-MXI-2, 3-12 to 3-13
 - A24/A32 write posting
 - VXIpc controller, 3-8
 - VXI/VME-MXI-2, 3-12 to 3-13